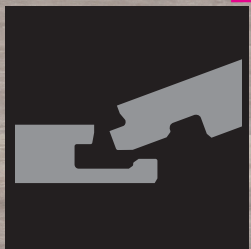


MODULAR VINYL

Installation in One Click



**STARFLOOR
CLICK 30 & 50**



 **Tarkett**

THE ULTIMATE
FLOORING EXPERIENCE

STARFLOOR CLICK

Installation recommendation

USE

USAGE

Starfloor click is a flooring exclusively meant for a residential indoor usage.



** follow our specific installation recommendations*

ACCLIMATISATION

Store the boxes in the room where the flooring will be laid at least 24 hours before its installation and in a room temperature of at least 15°C. Store the boxes flat, decor faced up.

INSTALLATION TEMPERATURE

The ideal installation temperature is 20°C. It should not be less than 15°C or more than 28°C.

Starfloor Click is compatible with underfloor heating. The heating system should have been operated for at least 4 weeks before the installation.

The floor temperature should not exceed 28 °C.

PREPARATION

Basic tools: a ruler, a cutter, a pencil, a wide ruler and gloves for the cuttings



Before starting the installation, check that:

- **the support is clean, hard and dry**
- **you remove all the dust (vacuum)**
- **Treat the support where/if needed (sand, fill holes...)**
- **you calculate the number of planks you will need to cover the room length and width and place them on the floor : this will ensure you have just the right quantity: not too many nor too few**

STARFLOOR CLICK

INSTALLATION ON NEW SUPPORT OR LEVELLED SUPPORT

Concrete screed / levelled floors

«STARFLOOR CLICK» can be laid directly over a smooth and flat concrete screed or levelled floors (levelling compound).

! If the concrete screed is not smooth and flat enough then a levelling should be done. If the levelling is not smooth and flat neither, it is highly recommended to apply a repair coating.

INSTALLATION ON EXISTING SUPPORTS

Plastic / linoleum support

«STARFLOOR CLICK» can be laid directly on compact and hard plastic flooring (vinyl) and on linoleum.

! It is not advised to install «STARFLOOR CLICK» over very soft and flexible plastic floorings (do not lay on expanded relief vinyl and foam backed vinyl). Such coverings must be removed before installation.

Textile support

! «STARFLOOR CLICK» is not compatible with carpet and other textile-based flooring. Such coverings must be removed before installation.

Ceramic tiles

«STARFLOOR CLICK» can be laid over a smooth ceramic tiles flooring when there are no joints and if all tiles are stable and at the same height. If it is not the case, unstable tiles should be sealed and joints filled in.

«STARFLOOR CLICK» can also be laid on tiles with joints but these should be levelled or prepared with a flooring repair coating (mortar or levelling compound).

INSTALLATION

Please pay extra attention to these instructions.

Alternating the planks during the installation

To ensure a perfect visual finish, the planks should be laid alternately.

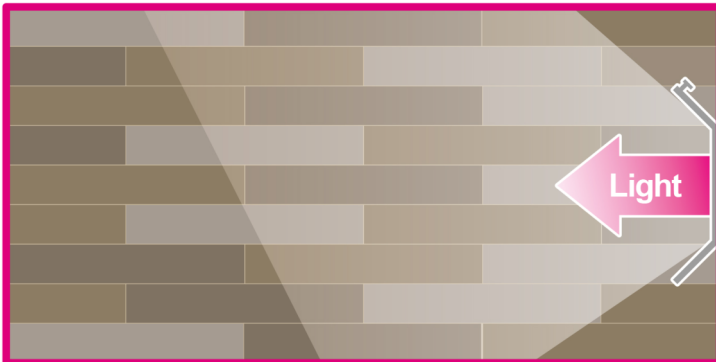
To do so, install one plank of the box 1 then one plank of the box 2, one of the box 3 and so on. Once you have taken one plank of each box, start again with a plank of the 1st and continue with a plank of the 2nd, then the 3rd, etc.

Make sure that the structure of the design on adjacent planks is different.

STARFLOOR CLICK

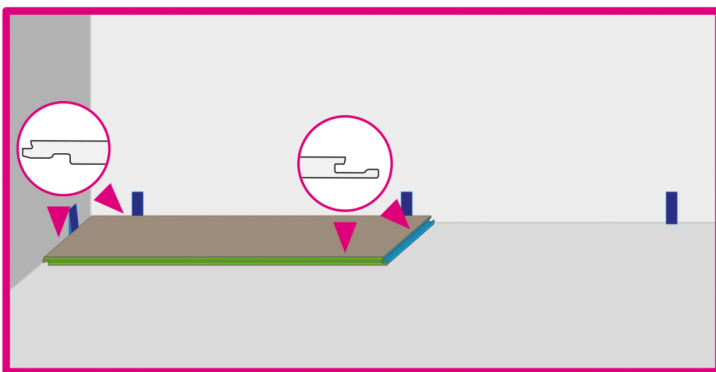
Advice

- complete the installation line by line
- always install from left to right
- where possible, install the flooring in the same direction as the incoming light

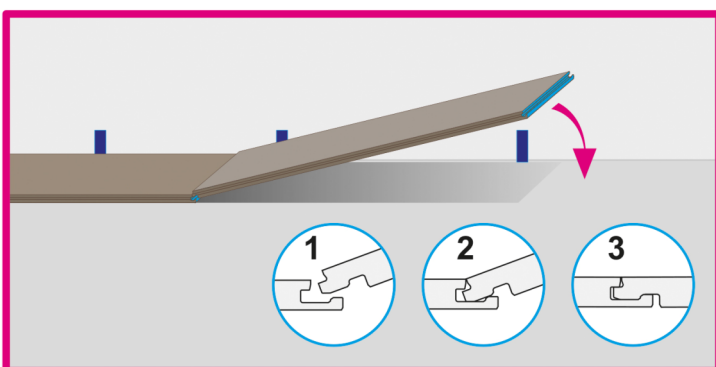


INSTALLATION OF «STARFLOOR CLICK» PLANKS

1. Place 5mm spacers between the wall and the 1st row of planks. Place the 1st plank in the left hand corner. Make sure the tongues are visible (identified in green and blue in the drawing).

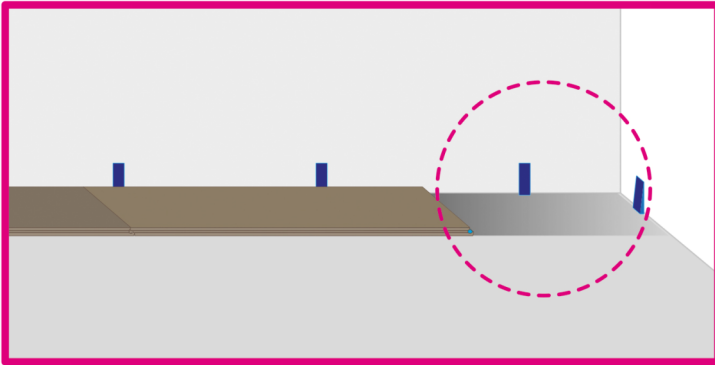


2. Place the second plank by inserting it in the groove (in blue in the drawing) of the 1st plank. Be careful not to damage the corners of the planks.



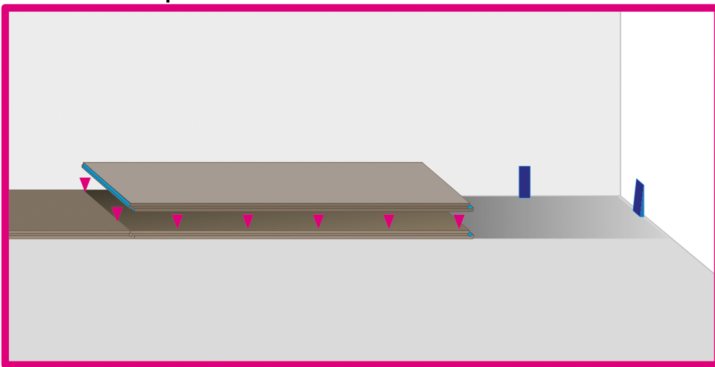
STARFLOOR CLICK

3. Continue in the same way up to the wall. If the last plank is too long, make a cut by scribing method (taking into account the expansion gap) and place the cut plank to complete the row.

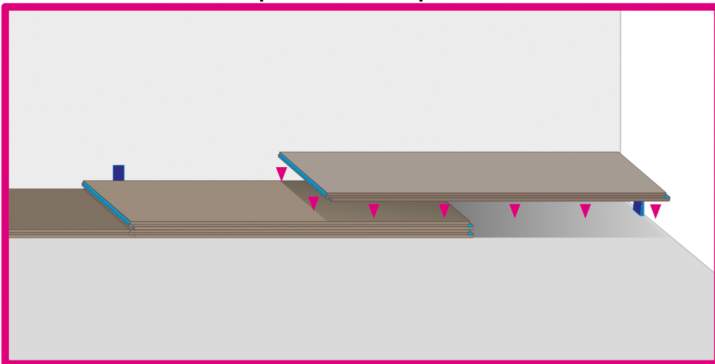


Scribing method:

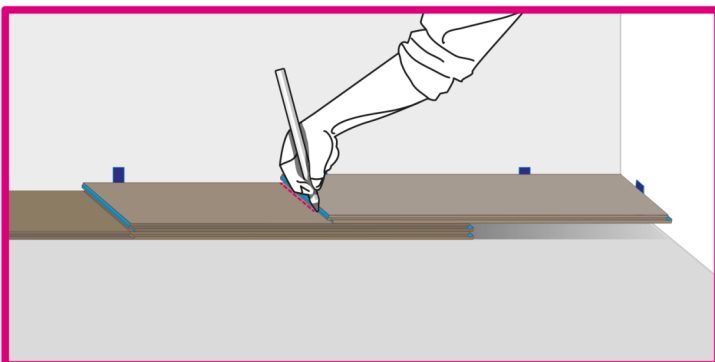
3a. Place a plank on the last board installed



3b. Place another plank on top of that board making sure it touches the wall



3c. Trace a line with a pencil on the former plank: this is the plank which will be cut and installed to finish the line



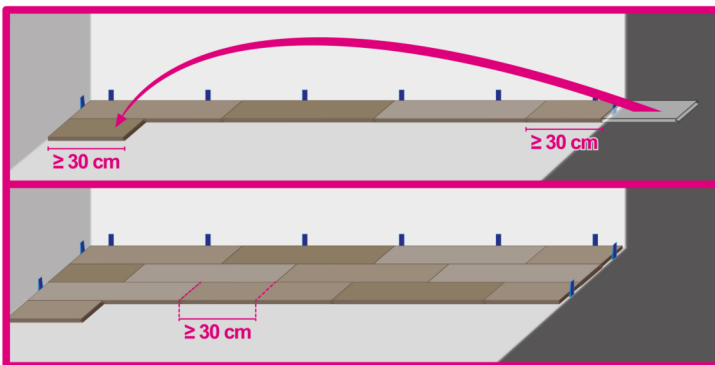
STARFLOOR CLICK

3d. Cut the plank and install the cut part normally



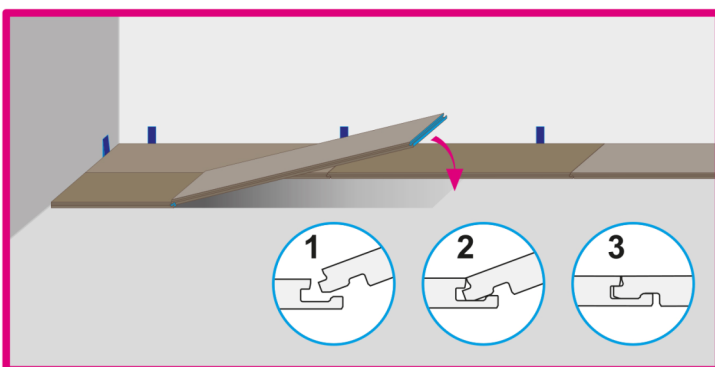
4. Then you can start the second row. The 1st plank of the second row should be smaller than the 1st plank of the 1st row to create a staggered installation. To do so use the rest of the cut last plank of the 1st row or use a new plank which you should cut so that it is smaller than the 1st plank, but no shorter than 30cm.

It's also important that the distance between the 2 short ends (blue in the drawing) is at least of 30cm.



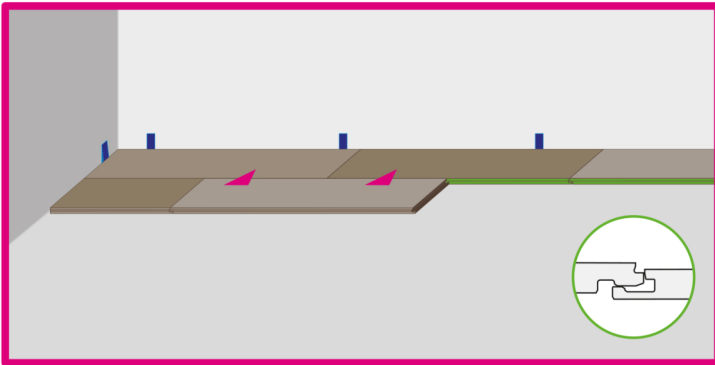
Caution: once you have installed the 1st plank of the second row, you should assemble the following planks by always starting with their short end tongue (in blue in the drawing). Before inserting the plank in the long side groove (in green in the drawing), slightly raise both planks before pushing them down together. Follow the next steps:

4a: slightly raise the short end of the plank (blue part)

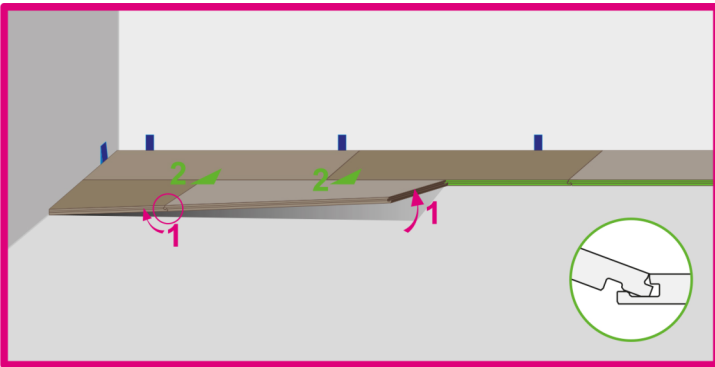


STARFLOOR CLICK

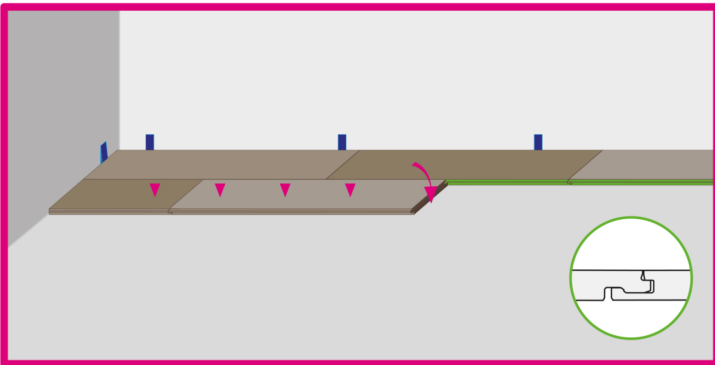
4b: insert the second plank in the short end groove of the first plank (blue)



4c: Insert the tongues of the second plank in the groove of the plank of the first row. You will need to raise slightly the first plank to do so



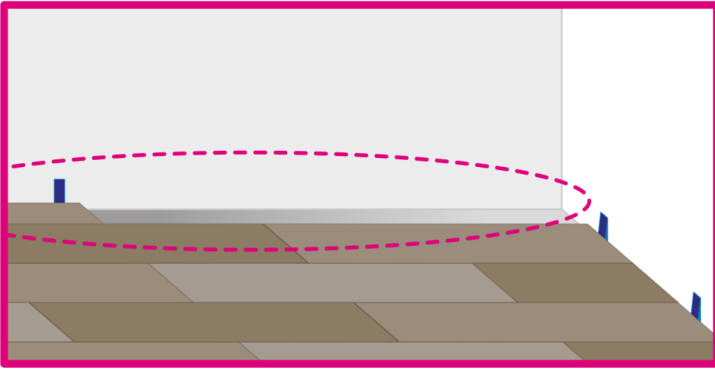
5: in order to complete the installation, you will need to push the planks to the floor to lock them



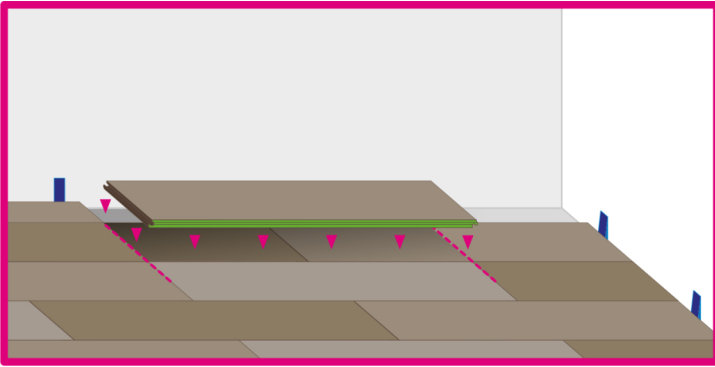
6. Proceed in the same way to complete the room till the opposite wall

STARFLOOR CLICK

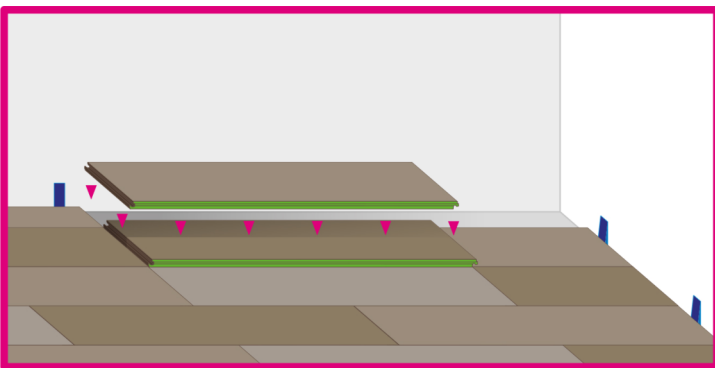
7. When you come to the last row and the planks are too wide to be installed completely (in full), you have to make a cut by scribing method (taking into account the expansion gap).



7a. Place a plank on the last board installed

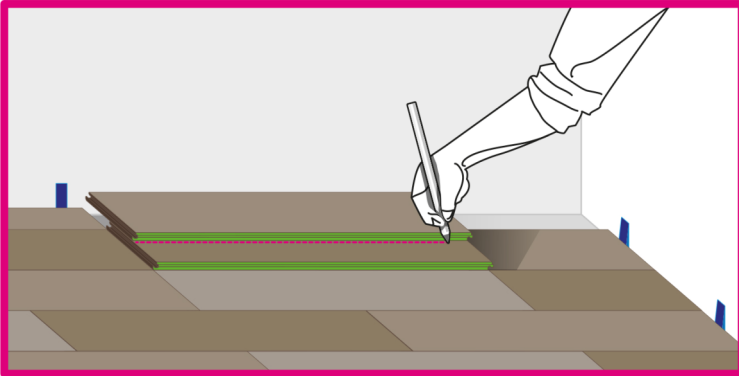


7b. Place another plank on top of that board making sure it touches the wall



STARFLOOR CLICK

7c. Trace a line with a pencil on the former plank: this is the plank which will be cut and installed to finish the line



8. To install a plank in the remaining the corner: make a cut lengthwise, then a cut width wise with the same method and insert the plank resulting from these cuts.

9. Once the installation of the flooring is completed, use a skirting to cover the expansion gap and to obtain a perfect finish. For a perfect aesthetic result, we recommend the use of Tarkett matching accessories.



SPECIFIC INSTALLATION FOR WET ROOMS

Treat all perimeters with a water resistant silicone to ensure a perfect sealing.
Do not leave stagnant water on the flooring.

STARFLOOR CLICK

MAINTENANCE RECOMMENDATION

Weekly maintenance

With a vacuum or a damp mop (use water and a neutral detergent).

Do not use chlorinated solvents, sugar soap or cleaning products with a linseed oil or acetone.

Do not use an excessive amount of water.

Do not polish, wax or glaze.

Tarkett recommends the use of felt or plastic protective pads under the feet of your furniture.



To treat stubborn stains

- Alcohol, rubber, petrol, grease: rub the stain with a detergent and rinse well.
- Paint, tar: rub the stain with a solvent (white spirit) and rinse well.
- Tomato, ink, blood: rub the stain with a detergent or white vinegar and rinse well

REPAIR / REPLACE «STARFLOOR CLICK »

In the unlikely case that you should replace a damaged plank,

To replace a damage plank, cut around the plank (following the join) with a cutter.

Remove the damaged plank.

Then take a new plank and cut its groove and tongue. Before installing this plank, make sure you respect the design orientation. The replacing plank and the surrounding ones should be fixed to the subfloor using double-sided tape. Make sure you roll and press all these planks properly to ensure their good bonding to the floor.