

LUXURY VINYL TILES

iD Mixonomi

Installation instructions

May 2017

IMPORTANT!

- Make sure all specifications and instructions are followed carefully.
- Contact your Tarkett representative if you are unsure about any part of the installation.
- This information is subject to change due to continuous improvement.
- Use the same shade number for each continuous surface.
- Store the boxes in small neat piles (max. 5 boxes high) and Handle with care because of sharp edges.
- Let the flooring acclimatise at least 24h before laying at room temperature (minimum 15°C).
- The subfloor must be flat, level, clean, without marks (no felt pen, marker, etc.), sound, dry, solid, hard, smooth and not exposed to moisture. Absorbency must be checked and adjusted to have moderately absorbent subfloor.
- Use only adhesives recommended by Tarkett and developed for LVT installation. Always follow the adhesive manufacturer's instructions and recommendations.
- For specific areas with sunlight exposure (winter garden...), select an adapted adhesive recommended by manufacturers.
- The work must be completed with an inspection: ensure that the newly laid floor is free from adhesive residues.

SUBFLOOR

The subfloor must be level, flat, clean, free from marks (no felt pen, marker of any type, ballpoint pens, paint, etc., that could cause discoloration due to migration) sound, dry, solid, hard, smooth (the absorbency must be checked) and not exposed to moisture.

The preparation/dryness of the subfloor and installation procedures should all be in accordance with the current relevant Standard within the country of use. The dryness of a solid subfloor should be below the maximum moisture level permitted when tested in accordance with that Standard.

E.g. in the UK, the relative humidity of concrete surfaces must be below 75%, and less than 2% with the CCM method. In North America, ASTM F-170 recommends a water-to-cement ratio of 0.40 to 0.45.

Before selecting a smoothing compound, check what type of traffic the floorcovering will be subjected to once installed. Latex smoothing compounds are not suitable for areas that will receive heavy traffic, especially heavy, narrow wheeled traffic (see EN 12529, Castors and wheels). Check levelling compound compatibility, and follow the instructions of the levelling compound manufacturer.

Note: exclusion of liability (adhesives, levelling compounds, etc.)

Although Tarkett may list a selection of adhesive, levelling compound and surface damp-proof membrane manufacturers and types, we do not guarantee the products listed. The list of products and manufacturers is not guaranteed complete or current.

Tarkett will accept no liability for any of these products failing to perform in conjunction with any of its products. It is the responsibility of the adhesive, levelling compound and surface damp-proof membrane manufacturer and flooring contractor to ensure the products being used are appropriate for use and applied in accordance with the manufacturers' recommendations.

CONDITIONS REQUIRED FOR INSTALLATION

It is important to store the planks for at least 24 hours before installation at a minimum room temperature of 15°C /see each country regulations/. This temperature should be maintained throughout the installation.

The minimum temperature of the subfloor should be 10-12°C and room temperature 15°C /see each country regulations/
The recommended relative humidity inside the room should be 35-65% /see each country regulations/.

Planks should be stored flat in their packages, in small neat piles (max. 5 boxes high).

UNDERFLOOR HEATING

It is imperative that underfloor heating systems have been previously commissioned and found to be functioning correctly before installation of the floorcovering.

Ensure that the underfloor heating system is switched off 48 hours before installation of the floorcovering commences, and remains off for at least 48 hours after installation is completed. While the underfloor heating system is off, an alternative heating source should be provided, if required, to ensure that the installation area is kept at a constant temperature of 18-27°C.

Gradually increase the temperature over a number of days by only a few degrees per day until the desired room temperature is reached.

The temperature should never exceed the floorcovering industry's agreed maximum of 27°C on the underside of the floorcovering (the adhesive line).

LAYING DIRECTION

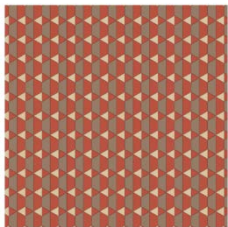
Before starting installation, determine the type of laying taking into account the shape of the room and the design to be laid.

Important! Before laying the first tiles, dry lay few tiles/planks to check that:

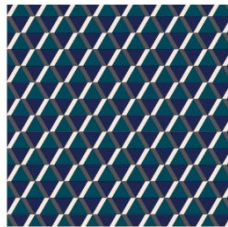
- the cut tiles closest to the walls are more than 10 cm wide;
- at doorways and corners, the cut tiles are not less than half a whole tile.

Installing a row of tiles/planks on the border can help to keep appropriate shape of your layout. Keep the same direction when installing the tiles/planks (check arrow printed on the backing).

Many defined layouts are available on iD Mixonomi online configurator <http://professionals.tarkett.com/idmixonomi> :



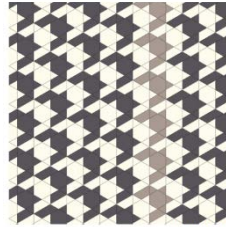
Bow Tile



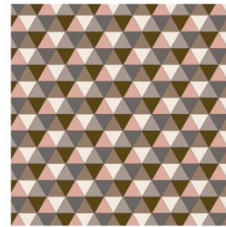
Club Tile 2



Wooden Twist



Houndstooth



Vintage Wheel

GLUING¹

Glue with an acrylic adhesive emulsion recommended by Tarkett. Apply about 250 g/m² using the recommended trowel (A1 or A2 according TKB std). Always follow the adhesive manufacturer's instructions and respect adhesive drying and working time. In case of particular conditions, ie. significant temperature variation (veranda, winter garden...) or heavy traffic, bi-component adhesive could be required.

Place the tiles or planks tight edge to edge.

Tiles/planks shape could need adjustment, always check assembly before gluing, trim the LVT when necessary.

After selected area installation, press manually the tiles or planks using a piece of board with a rounded edge. After manual pressing, use a heavy roller in both directions to ensure final bonding..

¹ For more details on gluing, please refer to the separate sheet: Adhesives and to the Tarkett recommended adhesives list available on internet.

AFTER INSTALLATION

IMPORTANT! Wait 48 to 72 hours before allowing any foot traffic or moving in furniture.

Protection of installation

If building work is carried out after installation, the floor should always be protected by covering it with hardboard or plywood sheeting. Masking tape must not be stuck directly to the floor. Never subject a newly installed floorcovering to heavy wheeled traffic at an early stage, as this will force adhesive from beneath the floorcovering.

Initial site clean

An initial site clean is always recommended before the new floorcovering is commissioned.

Residual adhesive should be removed with methylated spirits and a clean cloth.

Lightly soiled floors: vacuum, sweep or damp mop the area to remove loose dirt and building dust. A combined machine is very effective for large areas (combined scrubber/dryer with cylindrical brushes for safety flooring).