

LINOLEUM

Linospport

# Sports... and more!

## The ideal multi-use solution

Our **Linospport** range offer you a multi-use resistant solution for sport and more, such as various social, educational or recreational activities without protections.

- **New xf<sup>2</sup> surface treatment:** improved resistance for a performing and a durable solution.
- Linospport is a natural and safe range with low volatile organic compounds (VOC), easy to clean and maintain.

With Lumaflex Duo Linospport, go beyond sports practice and create a multi-use sports hall:

**PERFORMANCE**

- **Shock absorption**  
Optimised comfort and safety for players
- **Vertical deformation**  
Good foot support for athlete protection
- **Friction**  
Reactive surface with balanced friction and grip control
- **Ball rebound**  
Uniformly reactive surface for consistent ball bounce

Approved for multi-sport including roller practice

**DURABILITY**

- **Emissions**  
Indoor air quality improved by 10 times compared to standard level
- **Hygiene**  
Naturally bactericidal
- **High resistance to wear**  
Maintenance costs cut by up to 30%
- **High resistance to indentation**
  - Reduced effects of static load, indentation and pressure marks
  - Reinforced resistance to tear caused by rolling equipment and furniture
- **Versatile multi-use spaces without protections:**
  - Natural heavy load resistance
  - Organisation of non sportive events (dancing, weddings, exams)

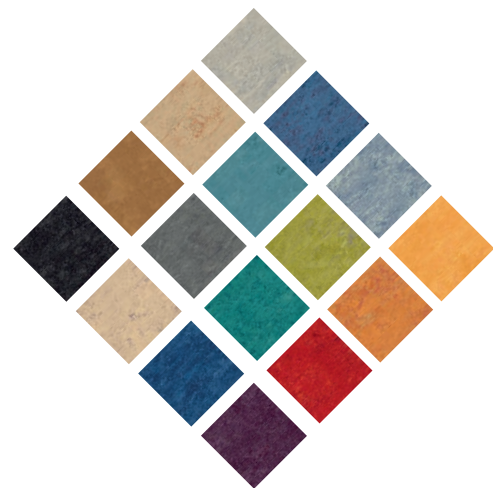
## Choose a natural product and create a healthy environment

- Natural product made of environmentally friendly ingredients
- 100% linen colour: the most authentic colour and sports surface made by nature, without colour pigments, available in Linospport xf<sup>2</sup> 3.2mm
- Silver Cradle to Cradle certified



## Create your atmosphere among our colour palette

- Play with our dynamic and natural colours to combine performance and pleasure



LINOLEUM

Linospport

## Specification

- Linoleum top layer for a durable solution for multi-use sportshall
- Optimal safety and sports performances
- Choose Linospport xf<sup>2</sup> surface treatment for increased durability
- Increased resistance to wear and crushing, allowing intensive use without floor protection

### Certifications



**DISCLAIMER:** Although the utmost care is taken, the data here given could differ and be subject to modifications from a technical point of view. In its strive to improve its floor solutions, Tarkett reserves the right to modify its technical specifications, colours and materials at any moment and without prior notice. Please, check the effective availability of the products presented at the time of order. Due to the technical limits of reproduction and printing techniques used, the appearance (colour) of the product may vary from the samples, panels or other visual display materials exhibited to the customer. It is mandatory to have the products installed properly if they are to service correctly and safely. Refer to Tarkett technical installation and maintenance directions, available at [HYPERLINK "http://www.tarkett.com"](http://www.tarkett.com) or at your Tarkett dealer.

■ **WESTERN EUROPE:** Austria: Tarkett Holding GmbH, Niederlassung Wien - Tel. +43 1 47 88 062 • Belgium: Tarkett France Belux - Tel. +32 16 35 98 80 • Denmark: Tarkett A/S - Tel. +45 43 90 60 11 • Finland: Tarkett Oy - Tel. +358 9 5406 5870 • France: Tarkett SAS - Tel. +33 1 41 20 42 49 • Germany: Tarkett Holding GmbH, Bereich Objekt - Tel. +49 62 33 810 • Greece: Tarkett Monoprosopi Ltd - Tel. +30 210 6745 340 • Italy: Tarkett S.p.A. - Tel. +39 0744 7551 • Luxembourg: Tarkett GDL SA - Tel. +352 949 211 8804 • Netherlands: Tarkett Holding GmbH, Vestiging Nederland - Tel. +31 76 57 80 760 • Norway: Tarkett AS - Tel. +47 32 20 92 00 • Portugal: Tarkett Tarkett Ltd - Tel. +351 21 427 64 20 • Spain: Tarkett Floors S.L. - Tel. +34 91 358 00 35 • Sweden: Tarkett Sverige AB - Tel. +46 771 25 39 00 • Switzerland: Tarkett Holding GmbH, Bereich Objekt Schweiz - Tel. +41 042 233 79 24 • Turkey: Tarkett Aspen - Tel. +90 212 213 65 80 • United Kingdom: Tarkett Ltd - Tel. +44 (0) 1622 854 040 ■ **EASTERN EUROPE:** Baltic Countries: Tarkett Baltics - Tel. +370 37 262 220 • Czech Republic: Tarkett France SAS, org. slozka - Tel. +420 271 001 602 • Hungary: Tarkett France SAS - Tel. +36 1 437 8150 • Poland: Tarkett Polska Sp. z o.o. - Tel. +48 22 639 31 68 • Russian Federation: ZAO Tarkett RUS - Tel. +7 495 775 3737 • Slovakia: Tarkett France SAS, org. slozka - Tel. +421 248 291 317 • South East Europe: Tarkett Trade d.o.o. - Tel. +381 21 7557 649 (44) 569 12 21 • Ukraine: Tarkett UA - Tel. +38 (0) 44 569 12 21 ■ **ASIA AND OCEANIA:** Australia: Tarkett Australia Pty Ltd - Tel. +61 2 88 53 12 00 • China: Tarkett Floor Covering (Shanghai) Co. Ltd. - Tel. +86 (21) 60 99 68 ext 861 • Hong Kong: Tarkett Asia Pacific Ltd. - Tel. +852 2511 8716 • India: Tarkett France (India Branch) - Tel. +91 11 4352 4072 • South East Asia: Tarkett Flooring Singapore Pte Ltd. - Tel. +65 6346 1585 ■ **AFRICA:** Tarkett International: Tel. +33 1 41 20 41 01 ■ **MIDDLE EAST:** Tarkett Middle East: Tel. +961 151 3363/4 • Israel: Tarkett International: Tel. +33 1 41 20 41 01 ■ **NORTH AMERICA:** USA: Tarkett Inc. - Tel. +1 713 869 5811 / Johnsonite - Tel. +1 440 543 8916 • Canada: Tarkett Inc. - Tel. +1 450 293 173 ■ **LATIN AMERICA:** Brazil: Tarkett Fademac - Tel. 55 12 3954 7108 • Other countries: Tarkett America Latina - Tel. +55 11 3047 7200 • Argentina - Chile - Uruguay: Tarkett Latam Mercosur - Tel. 54 11 48 06 74 28 / 54 9 11 44 46 88 82 • Colombia - Panama - Caribbean: Tarkett Latam Andina - Tel. 57 1 759 5781 / 57 312 273 1566 • Bolivia - Ecuador - Paraguay - Peru: Tarkett Latam Sur Oeste - Tel. 59 11 3047 7233 • Mexico / Central America: Tarkett Latam Mexico - Tel. 52 735 35 63 918 / 52 55 51 07 9524

**TarkettSPORTS** | [www.tarkett-sports.com](http://www.tarkett-sports.com)

Printed on 100% recycled paper and cardboard - 100% recyclable  
Linospport - 14849 0204-05 - 04/14

SPORTS

Linospport

LINOLEUM

TarkettSPORTS

LINOLEUM

Linospport

MADE IN EUROPE

**TarkettSPORTS** | THE ULTIMATE SURFACE EXPERIENCE



LINOLEUM

# Linosport

## Linosport xf<sup>2</sup> 3.2 mm

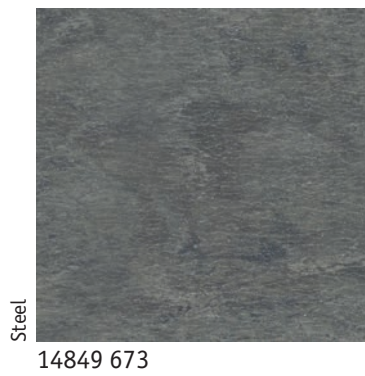
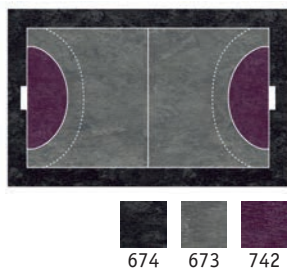
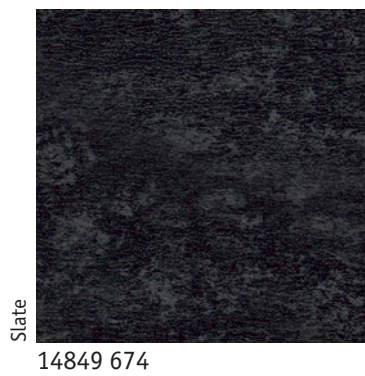
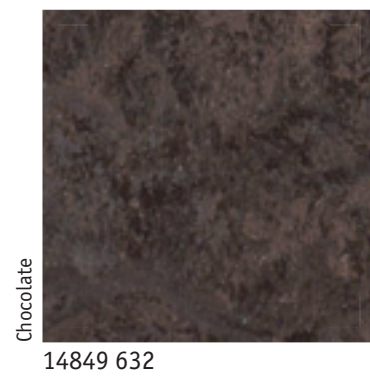
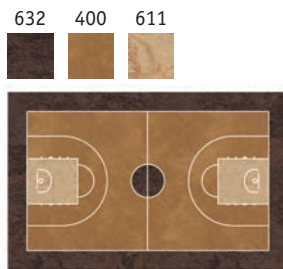
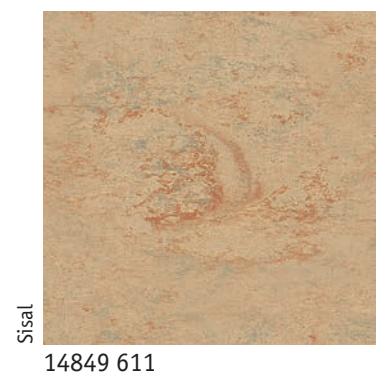
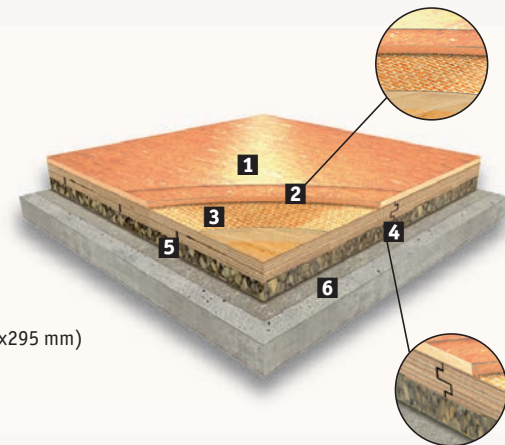


### The ready-to-use, durable and cost-effective sports and multi-use solution

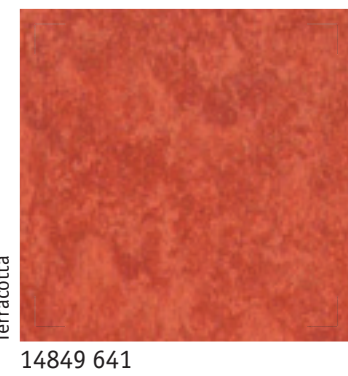
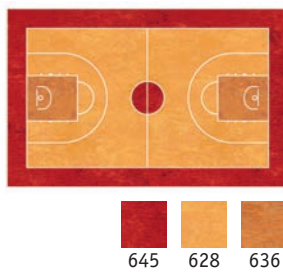
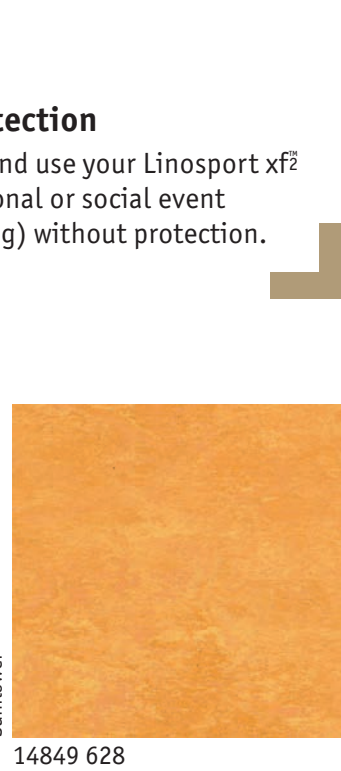
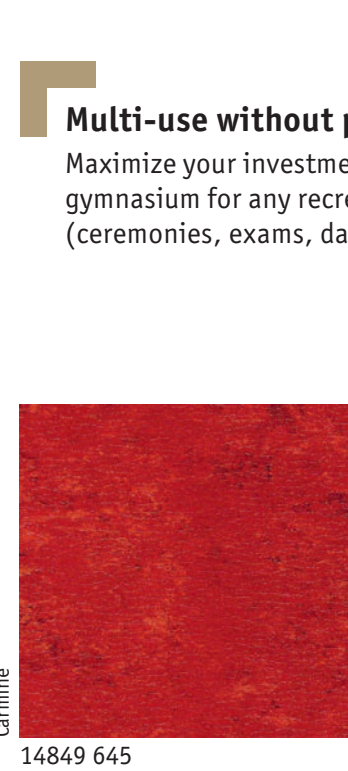
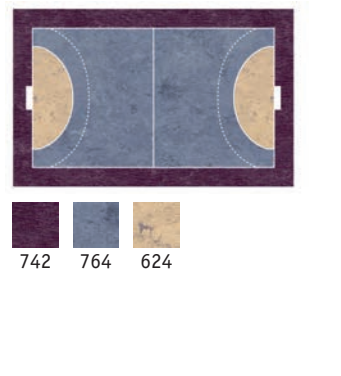
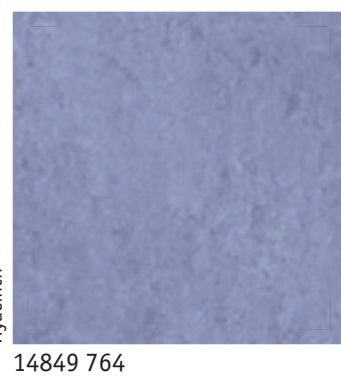
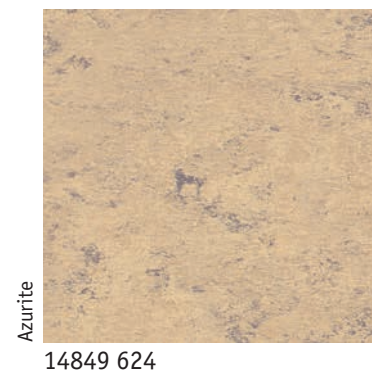
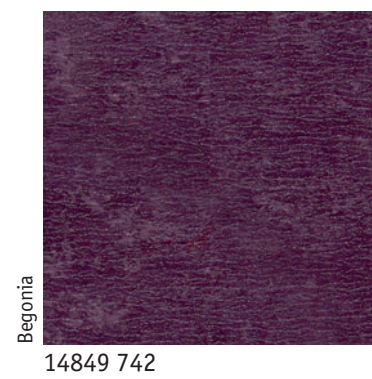
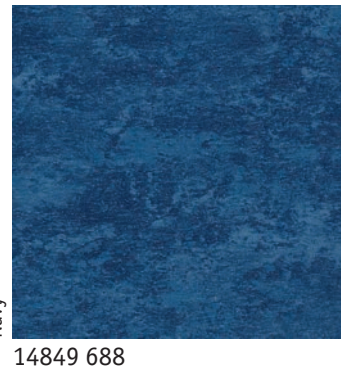
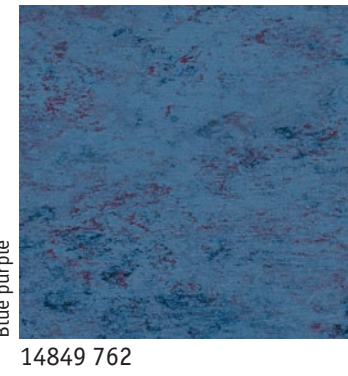
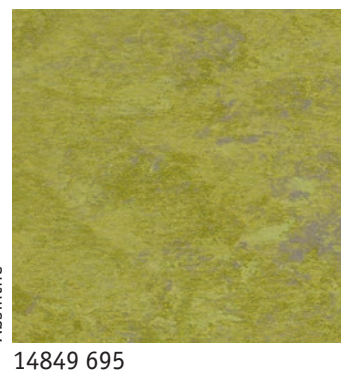
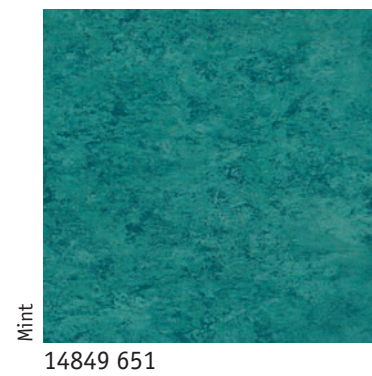
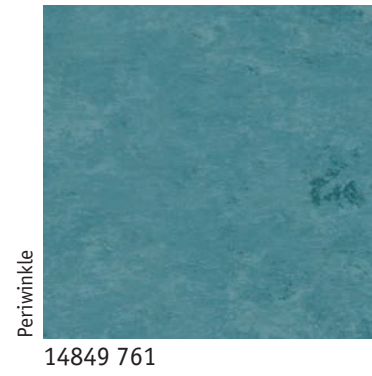
- Increased resistance to bring improved durability and easier maintenance for a highly cost-effective sports flooring.
- Smoother matt appearance for more natural look and less accumulation of dirt and stains.
- No need for polish, stripping or polymer waxing over the lifetime of the surface.

#### Lumaflex Duo Linosport xf<sup>2</sup>

- 1 x-treme xf<sup>2</sup> finish
- 2 Homogenous monolayer linoleum
- 3 Jute backing
- 4 Lumaflex Duo (birch plywood - 18 mm thick - board dimensions 2430x295 mm)
- 5 Tarfoam
- 6 Tarfilm



TarkettSPORTS



### Multi-use without protection

Maximize your investment and use your Linosport xf<sup>2</sup> gymnasium for any recreational or social event (ceremonies, exams, dancing) without protection.

LINOLEUM

# Linosport

## Linosport Classic 4 mm



### The natural and resistant solution

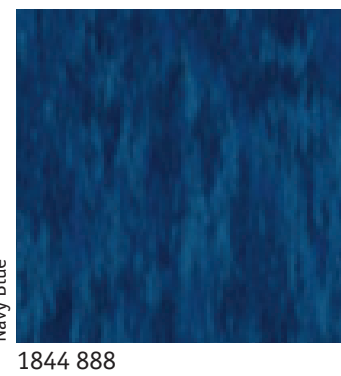
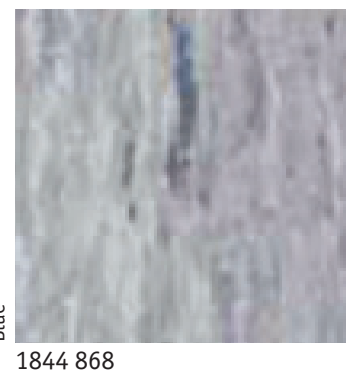
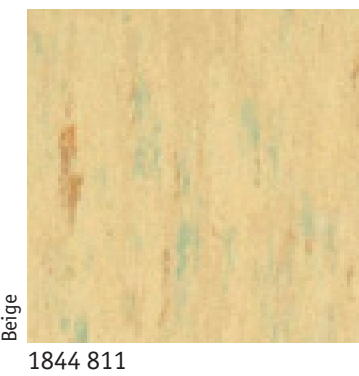
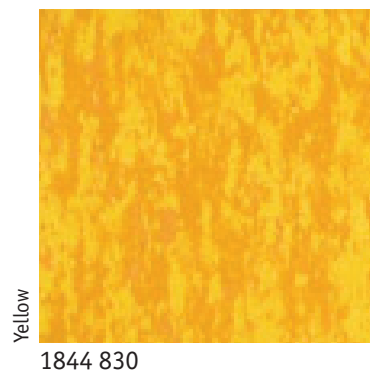
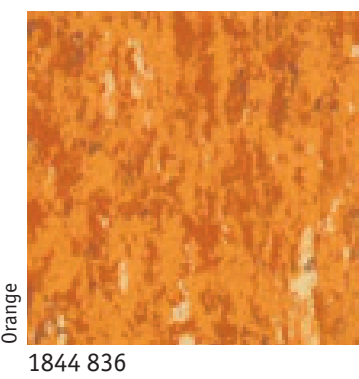
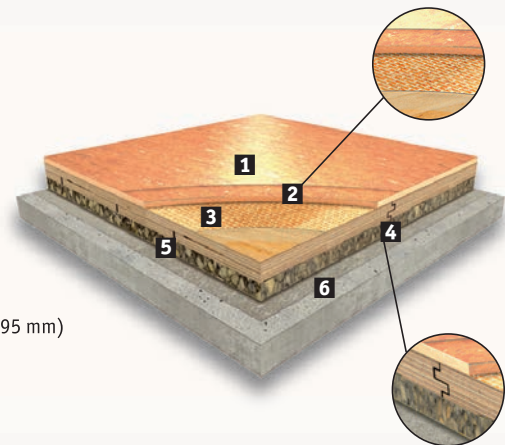
- Natural homogeneous structure for good surface uniformity.
- 4mm pure linoleum top-layer: allowing endless renovation possibilities if needed.
- Linofinish: resistant treatment to be added in situ (Art. code: 1551083).

### 2 constructions available:

- **Linosport Classic:** 4mm linoleum solution.
- **Lumaflex Duo Linosport Classic:** the strength of linoleum combined with safety and performance of Lumaflex Duo sub-construction, compliant with EN 14904 (with Linofinish applied in situ).

#### Lumaflex Duo Linosport Classic

- 1 Linofinish applied in situ
- 2 Homogenous monolayer linoleum
- 3 Jute backing
- 4 Lumaflex Duo (birch plywood - 18 mm thick - board dimensions 2430x295 mm)
- 5 Tarfoam
- 6 Tarfilm



**Disclaimer on yellowing effect:**  
Once unpacked, linoleum could not show its final colour immediately. Linoleum often comes with a slight yellow surface film as a result of the natural production process.  
The yellow tint will disappear progressively with exposure to light; 24 hour exposure to bright daylight will make it disappear completely.  
This phenomenon is reversible. When the flooring is covered by furniture or other objects, the yellow film will reappear on these areas, and will disappear once again when they are exposed to daylight.  
As a general rule, the natural surface film affects different colours of linoleum in different ways: Grey and blue tend to turn towards a shade of green while beige turns more towards a shade of yellow.

