

# Aquasens

WETROOM CONCEPT

Designed  
for safety &  
well-being







## CONTENTS

---

Designs to boost well-being	08
Safe, hygienic, reassuring	12
An eco-designed solution for people and the planet	14
Watertight, hygienic, durable, practical: a complete solution	16
Design inspirations	18
Installation: key steps	38
Accessories	40
Design overview	46
Technical datasheets	51
Product references and codes	52

## IT'S TIME

---

It was time to reinvent the wetroom.

To imagine new designs that help you feel comfortable and safe.  
To give patients and residents more comfort and autonomy.  
To think long term, eco-friendly.  
Create floors and walls that are durable, easier to maintain and repair.

To reinvent it together and consider everyone's needs: a choice of natural and attractive designs that help architects find inspiration.  
Improved adherence and cleanability that helps care staff in their daily job.  
Patterns and textures to help those living with dementia keep their bearings.  
A complete solution that's faster for installers.  
To offer building engineers a complete solution backed by know-how and expertise.

**It is time.  
Discover Aquasens.  
Aquasens, designed for safety and well-being.**



# DESIGNED FOR EVERYONE'S WELL-BEING



## SALUBRIOUS HEALTHCARE

Floor and wall solutions that are easier for maintenance personnel to clean and keep clean, for improved hygiene standards medical staff can trust in. Familiar, soothing, reassuring designs that feel less clinical and more like home, so recovering patients feel comfortable and serene.



## SUPPORTIVE ELDERLY CARE

Designs that are both dementia- and impairment-friendly. Reassure care staff and support the autonomy and safety of elderly residents, by reducing the risk of falls or disorientation. Our designs offer straightforward maintenance and cleaning to help service personnel keep everything in good shape.



## LASTING COMMUNITY ACCOMMODATION

Materials that are durable yet eco-friendly and sustainably-produced, for housing that students and residents will value. Reliable, durable solutions that maintenance staff are sure to appreciate. A proven concept backed by know-how and expertise that will give promoters full confidence in the result.



## DESIGNS TO BOOST WELL-BEING

- Vast palette of 64 designs inspired by the essence of nature
- Many matching floor and wall choices
- XXL immersive designs
- Elegant accessories for a refined finish
- Approved dementia-friendly designs



## SAFE, HYGIENIC, REASSURING

- Anti-slip floors: class C barefoot, R10 shod
- Safety: choose between studs, grip particles and anti-slip embossing
- Stain-resistance and easy cleaning thanks to special embossings & PU protections
- Highly resistant to bacteria: tested according to ISO 846-does not encourage bacterial growth
- Few joints, easy to cove and hot-weld



## DURABLE, SUSTAINABLE, RESPONSIBLE

- Up to 33% recycled content
- Recyclable installation off-cuts and post-use\*
- Can be recycled through ReStart®
- Optimal indoor air quality
- No phthalates
- No heavy metals, no biocides



## SECURE WATERTIGHT SYSTEM

- Comprehensive, 100% water-resistant system (walls, floors and accessories)
- New tools and accessories for simpler installation and welding
- Expert training programme

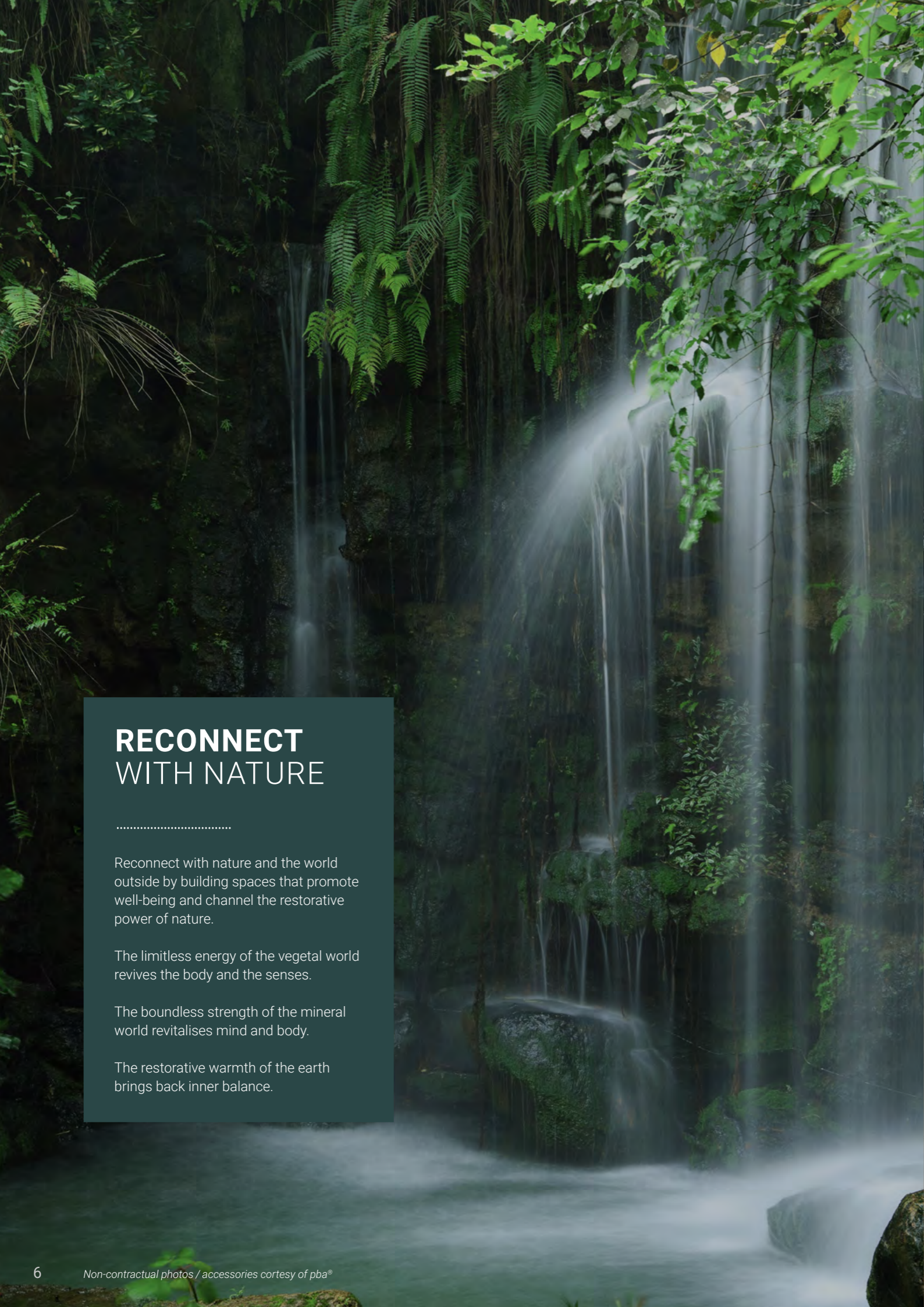


## LOOKING FOR INSPIRATION?

To help you create pleasant wetrooms in your facility, our design team have created many ready-to-use design configurations that can be found in our design guide section.

\* For Granit collections.





## RECONNECT WITH NATURE

Reconnect with nature and the world outside by building spaces that promote well-being and channel the restorative power of nature.

The limitless energy of the vegetal world revives the body and the senses.

The boundless strength of the mineral world revitalises mind and body.

The restorative warmth of the earth brings back inner balance.

VERDANT RENEWAL

MINERAL VITALITY

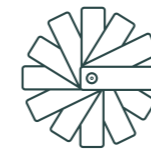
NURTURING EARTH



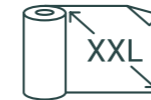


# DESIGNS TO BOOST WELL-BEING

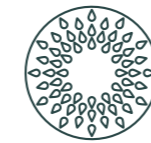
Marble, wood, plants, sand – harness the feel and colour of natural elements to make the wetroom a haven of well-being. Create welcoming and soothing spaces that reinvigorate and provide home-like levels of comfort.



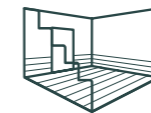
Mix and match nature's best: **64 different patterns divided between walls and floors** provide maximum scope for inspiration and variety.



**Unique panoramic XXL** decors offer an immersive experience with on-demand colour variation to create unique, personalised environments.



Stylish finishes and accessories including drain grids.



**Coordinate wetroom design with adjacent** areas in other Tarkett collections (Platinum, Excellence, ProtectWALL or iQ Granit).

## LOOKING FOR INSPIRATION?

To help you create pleasant wetrooms in your facility, our design team have created many ready-to-use design configurations that can be found in our design guide section.

### FOCUS ON DEMENTIA-FRIENDLY DESIGN:



- The Aquasens range includes many designs approved for environments used by people living with dementia.
- Decors to create a home-like impression (with plain colours, woods and subtle patterns).
- Colours and designs that use contrast to boost visibility and orientation.





# FORESTIC Aqua Green

3942 107



Design dimensions: 2 x 3.09 m

Repeated endlessly on the roll



Horizontal  
Installation

## XXL IMMERSIVE DESIGNS FOR RELAXING EXPERIENCE

3 panoramic XXL decors offer an immersive experience to boost relaxation and provide a sense of well-being for users. The decors require horizontal installation for infinite and seamless repetition (up to 35 m length).

# MISTY MOUNTAIN Grey

3942 106



Design dimensions: 2 x 4 m

Repeated endlessly on the roll



Horizontal  
Installation

## PERSONALISED COLOURS

If you want to create unique, personalised environments with colours that match your facility's visual identity or design scheme, our XXL formats can be developed in a range of special shades, in collaboration with Tarkett design studio.

- Minimum order: 700 m<sup>2</sup>
- Production leadtime: 4 to 6 weeks after order is placed

For more information contact your Tarkett representative.

# SOFTNESS Nude

3942 108



Design dimensions: 2 x 1 m

Repeated endlessly on the roll



Horizontal  
Installation



Examples of possible colour personalization





# SAFE, HYGIENIC, REASSURING

To make the daily use of wetrooms by patients, staff and residents a pleasant, safe experience, Aquasens offers an integrated solution for hygienic, sealed showers and wetroom areas.

## ANTI-SLIP PROTECTION + HYGIENE AND CLEANABILITY

Aquasens floors strike the right balance between cleanability and anti-slip safety.\* All floors and walls in the range are fire-resistance certified (Bfl-s1 and Bs2-d0).



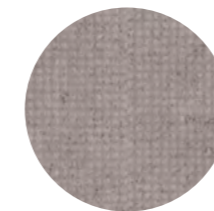
**BAREFOOT TEST**  
**CLASS C**  
DIN EN 16165 NB. 1  
water & soap



**FOOTWEAR TEST**  
**R10**  
DIN EN 16165 NB. 2  
on lubricant

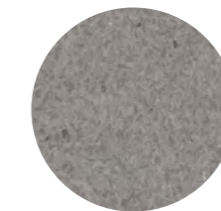
Types of embossing: anti-slip surface, grip particles or studs.

**AQUA MULTISAFE**  
NEW Safetech anti-slip finishing



**Surface Treatment**  
Top Clean XP™

**GRANIT SAFE.T**  
Sanded and anti-slip particles



**Surface Treatment**  
Safe.T Clean XP™

**GRANIT MULTISAFE**  
Studs optimised for  
easy cleanability



**EASY  
CLEANING**

- Aquasens floors and walls have a special surface treatment (PU protection) and optimised embossing for **better resistance to stains and soiling**, such as the marks caused by Betadine Yellow or Red and Methylene Blue.\*
- Our wetroom concept has **fewer joints and is easier to cove or hot-weld** for a fully waterproof solution with enhanced cleanability.
- Aquarelle Wall HFS: smooth embossing and few joints for easy cleanability. **Rated "Excellent" in Riboflavin test** for cleanability: no residues visible whatsoever.
- **Highly resistant to bacteria:** tested according to ISO 846-does not encourage bacterial growth.

\* All tests results available on demand.





# AN ECO-CONSCIOUS SOLUTION FOR PEOPLE AND THE PLANET

Aquasens collections have been eco-designed by Tarkett's teams and produced in our plants in Europe, ensuring the development of an advanced and sustainable range. Each collection is meticulously crafted to deliver optimal sustainable credentials, with low carbon footprint and the possibility to contribute towards green-building certifications.

## DESIGNED FOR A CIRCULAR ECONOMY



- Recycled materials make up around 1/3 of our floors' content (see technical data for details)
- Aquasens is a durable solution with a life of up to 20 years, as stated in its Environmental Product Declaration\*
- Our hassle-free **ReStart® take-back and recycling programme can offer post-installation and post-use recycling**
- **Recycling at our Clervaux and Ronneby recycling centre.** We recycle in accordance with ISO 14021

## SUSTAINABLE PRODUCTION



- Responsible production with 0% production waste sent to landfill
- 100% low carbon electricity
- 100% recirculated industrial water in a closed-loop system
- Our production plants have ISO 14001 (Environment) and ISO 50001 (Energy) certification
- **Made in Europe** for shorter transportation distances

## GOOD MATERIALS



- No heavy metals, no biocides, and no phthalates for more responsible PVC
- Our wetroom concept is REACH-compliant
- Available Material Health Statements (MHS) showing composition and Environmental Product Declarations (EPD) which state environmental impact
- 98% of materials assessed by a third party

## HEALTH AND WELL-BEING



- To ensure better indoor air quality, Aquasens has ultra-low VOC emissions, 100 times lower than EU standards
- **Highly resistant to bacteria**  
ISO 846 – does not encourage bacterial growth

\* Based on an installation performed by a professional installer, trained by Tarkett and following the Wetroom Concept specifications  
 \*\* Material health / product circularity / renewable energy and climate requirements / water stewardship / social fairness





# WATERTIGHT, HYGIENIC, DURABLE, PRACTICAL: A COMPLETE SOLUTION

Achieving a fully waterproof wetroom can be complicated. Corners, thresholds, pipework and drainage often cause gaps that let in moisture and dirt, so a comprehensive approach works best.

Tarkett has extensive experience in wetroom design and can help you protect your sealed shower or wetroom with a complete system offering the perfect watertight, hygienic finish.



**AQUASENS is a 100% waterproof** solution for floors, walls and borders with a full range of matching welding rods and a complete portfolio of accessories for drains, thresholds, pipes and more. (See page 40 for details.)



**Discover new grooving and welding tools** that simplify the installation process. The new unroller is especially helpful for horizontal installations. (See page 45.)



**Made in Europe**, backed by over 40 years of wetroom expertise.



**10-year product guarantee.**



Specialised training available for installers via our centres. Ask your local representative.

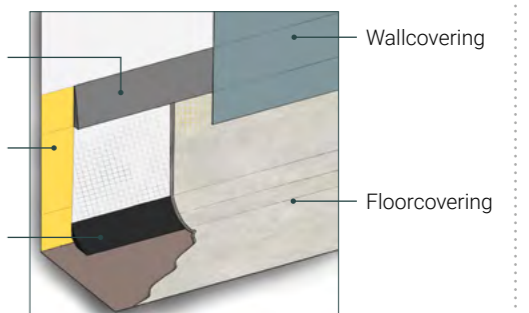
## FOCUS ON OUR NEW COVING INSTALLATION SYSTEM

- Unique, market-first solution
- Faster, hassle-free installation
- Glueless and odourless
- No need for special tools
- No mess
- No added costs

Junction profile PJ30  
in self-adhesive  
ref. 1418 003

Pre-cut double  
sided tape  
ref. 26667 000

Coving profile PA20  
in self-adhesive  
ref. 1441 001





# VERDANT RENEWAL

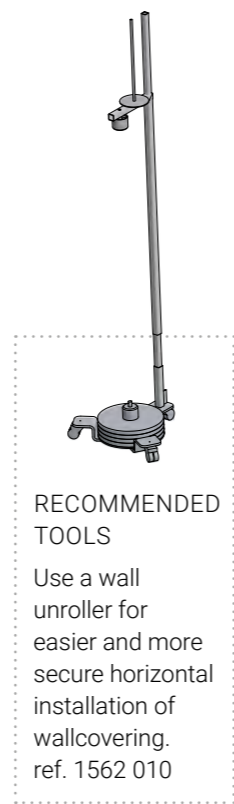
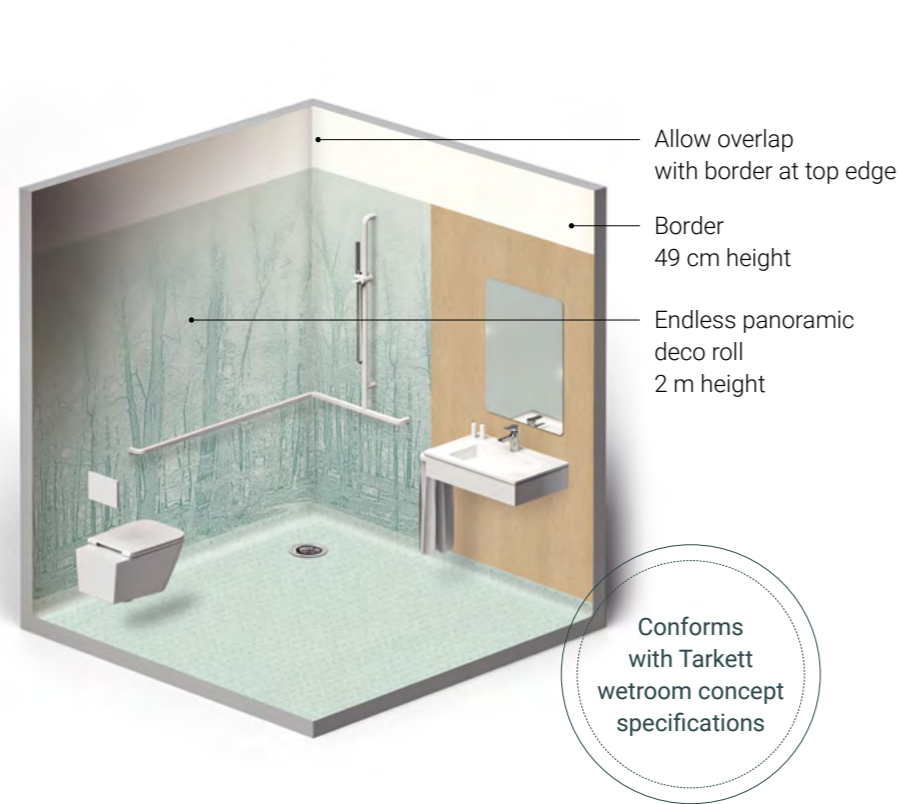
Create balance and soothing atmospheres in your wetroom. Featuring wood tones, a bright shower area, calming greens, and white accessories, it is a refreshing choice inspired by biophilic design.





# VERDANT RENEWAL: HOW TO INSTALL IT AND WHAT YOU WILL NEED

A hybrid installation, vertically oriented around the washbasin and horizontally seamless in the shower area.



## COMPONENTS:

<p><b>BORDER</b> Uni Super White 25900 137</p> <p><b>AQUARELLE WALL HFS</b> Forestic Aqua Green 3942 107</p> <p><b>AQUARELLE WALL HFS</b> Oak Tree Natural 3942 104</p>	<p><b>GRANIT MULTISAFE</b> Soft White Green 21154 471</p>	<p><b>White Drop Grid</b> 26657 001</p> <p><b>Welding Rod</b> Oak Tree Natural 24806 204</p>
  		 
Walls	Floor	Accessories

# TRY ALTERNATIVE THEMES CHOOSE PANORAMIC DESIGNS




Fully surrounding horizontal installation with no vertical joints.

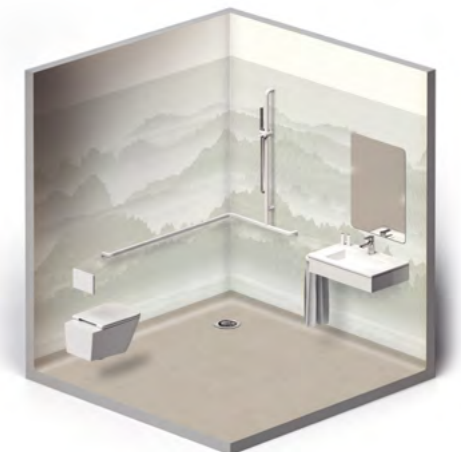
Step into nature with our Forestic design.

 <b>AQUARELLE</b> Uni Super White 25900 137	 <b>GRANIT MULTISAFE</b> Soft White Green 21154 471	 <b>AQUARELLE WALL HFS</b> Forestic Aqua Green 3942 107
Border	Floor	Wall






Open up the horizon with our Misty Mountain design.

 <b>AQUARELLE</b> Uni Super White 25900 137	 <b>AQUA MULTISAFE</b> Concrete Safe Chalk 26544 001	 <b>AQUARELLE WALL HFS</b> Misty Mountain Grey 3942 106
Border	Floor	Wall



Bathe your senses in the calming warmth of our Softness design.

 <b>AQUARELLE</b> Uni Super White 25900 137	 <b>GRANIT SAFE.T</b> White Beige 21153 512	 <b>AQUARELLE WALL HFS</b> Softness Nude 3942 108
Border	Floor	Wall





# THERMAL REGENERATION

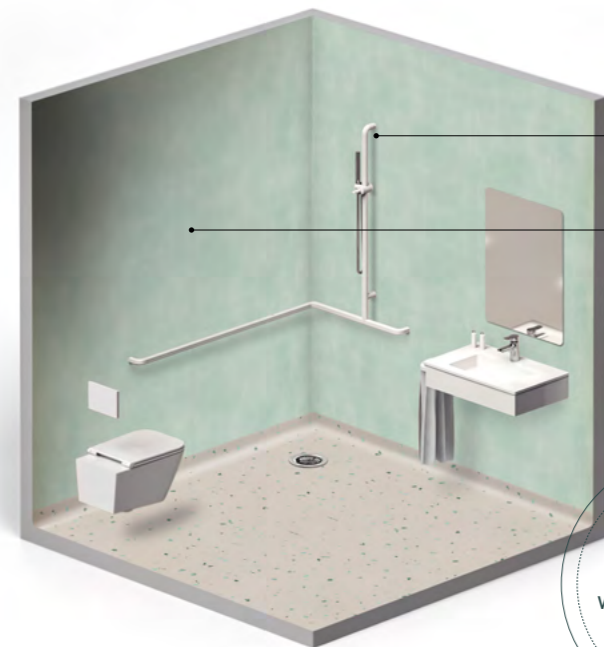
For a relaxing and energising space. Harmonious pastels, brushed steel accessories, and white highlights, create a simple yet contemporary design.





# THERMAL REGENERATION: HOW TO INSTALL IT AND WHAT YOU WILL NEED

The classic installation, ideal for small spaces. Inject visual interest and rhythm using patterns and materials that contrast with a conventional one-colour approach to give your wetroom character.



Place shower head as far as possible from welding rod for a watertight finish

Vertical installation  
Full-height rolls (width 2 m)

Conforms with Tarkett wetroom concept specifications

## COMPONENTS:

<p>WALL</p> <p>AQUARELLE WALL HFS Rustic Velvet Light Aqua 3942 089</p>	<p>FLOOR</p> <p>AQUA MULTISAFE Terrazzo Safe Petrol Blue 26544 008</p>	<p>ACCESSORIES</p> <p>Art Deco Stainless Steel 1417 010</p> <p>Welding Rod Rustic Velvet Light Aqua 24806 226</p>
-------------------------------------------------------------------------------------	------------------------------------------------------------------------------------	---------------------------------------------------------------------------------------------------------------------------------------

# SIMPLE ALTERNATIVE ROUTES TO RELAXATION

The peaceful palm protection provided by jungle greenery.

<p>ACCESSORIES</p> <p>Standard White 1417 001</p>	<p>WALL</p> <p>AQUARELLE WALL HFS Palm Shadow 3942 111</p>	<p>FLOOR</p> <p>GRANIT SAFE.T Soft Light Grey 21153 524</p>
-------------------------------------------------------	--------------------------------------------------------------------	---------------------------------------------------------------------



Noble materials and minerals create an atmosphere of timeless tranquility.

<p>ACCESSORIES</p> <p>Matt Black Drop Grid 26657 002</p>	<p>WALL</p> <p>AQUARELLE WALL HFS Marble Carrare 3942 079</p>	<p>FLOOR</p> <p>AQUA MULTISAFE Concrete Safe Dark Grey 26544 003</p>
--------------------------------------------------------------	-----------------------------------------------------------------------	------------------------------------------------------------------------------



A comforting, gently cocooning space formed by the wood's naturally pervasive warmth.

<p>ACCESSORIES</p> <p>Matt Black Drop Grid 26657 002</p>	<p>WALL</p> <p>AQUARELLE WALL HFS Oak Tree Natural 3942 104</p>	<p>FLOOR</p> <p>AQUA MULTISAFE Concrete Safe Dark Grey 26544 003</p>
--------------------------------------------------------------	-------------------------------------------------------------------------	------------------------------------------------------------------------------





# PURIFYING CLAY

Use a warm colour palette in terracotta tones, alongside highly contrasting black bathroom accessories for a modern look.





# PURIFYING CLAY: HOW TO INSTALL IT AND WHAT YOU WILL NEED

Structure your space by dividing it into contrasting zones with distinctive borders and accessories for a stylish yet timeless feel. Highlight the shower area using a mix-and-match approach to colour and design.

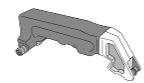


- Give the installation emphasis with welding rods in contrasting shades
- Vertical installation helps the corner stand out as a focal point
- Place shower head as far as possible from welding rod for a watertight finish
- Tailor your design to the wetroom's dimensions to create a feeling of space

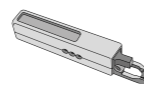
Conforms with Tarkett wetroom concept specifications

### RECOMMENDED TOOLS

For perfectly bevelled and welded joints:



Groover with detail nozzle ref. 1258 100



Welder with turbo detail nozzle ref. 1258 102

### COMPONENTS:

<p>Walls</p> <p>AQUARELLE WALL HFS Uni Terracotta 3942 118</p> <p>AQUARELLE WALL HFS Rustic Velvet Nude 3942 087</p>		<p>Floor</p> <p>AQUA MULTISAFE Terrazzo Safe Terracotta 26544 009</p>		<p>Accessories</p> <p>Black Drop Grid 26657 002</p> <p>Welding Rod Black 24806 006</p>	
--------------------------------------------------------------------------------------------------------------------------------------	--	-----------------------------------------------------------------------------------	--	--------------------------------------------------------------------------------------------------------	--

# STRUCTURE YOUR SPACE INTO CONTRASTING ZONES

A shower corner with a tropical feel adds an exotic touch.

<p>Accessories</p> <p>Art Deco Grey 26659 003</p>		<p>Walls</p> <p>AQUARELLE WALL HFS Concrete Mastic 3942 096</p> <p>AQUARELLE WALL HFS LeafBanana Forest Green 3942 100</p>		<p>Floor</p> <p>AQUA MULTISAFE Concrete Safe Chalk 26544 001</p>	
-----------------------------------------------------------	--	--------------------------------------------------------------------------------------------------------------------------------------------	--	--------------------------------------------------------------------------	--



Clear-cut lines and contemporary colours create a reassuring space.

<p>Accessories</p> <p>Art Deco Black 26659 002</p>		<p>Walls</p> <p>AQUARELLE WALL HFS Concrete Mastic 3942 096</p> <p>AQUARELLE WALL HFS Delta Grege Black 3942 102</p>		<p>Floor</p> <p>GRANIT SAFE.T Soft Dusty Yellow 21153 909</p>	
------------------------------------------------------------	--	--------------------------------------------------------------------------------------------------------------------------------------	--	-----------------------------------------------------------------------	--



Maritime feel with a sense of fresh air and freedom.

<p>Accessories</p> <p>Art Deco Black 26659 002</p>		<p>Walls</p> <p>AQUARELLE WALL HFS Uni Aqua 3942 116</p> <p>AQUARELLE WALL HFS BananaLeaf Light Aqua 3942 098</p>		<p>Floor</p> <p>AQUA MULTISAFE Oak Tree Safe Warm Brown 25912 007</p>	
------------------------------------------------------------	--	-----------------------------------------------------------------------------------------------------------------------------------	--	-------------------------------------------------------------------------------	--





# NURTURING EARTH

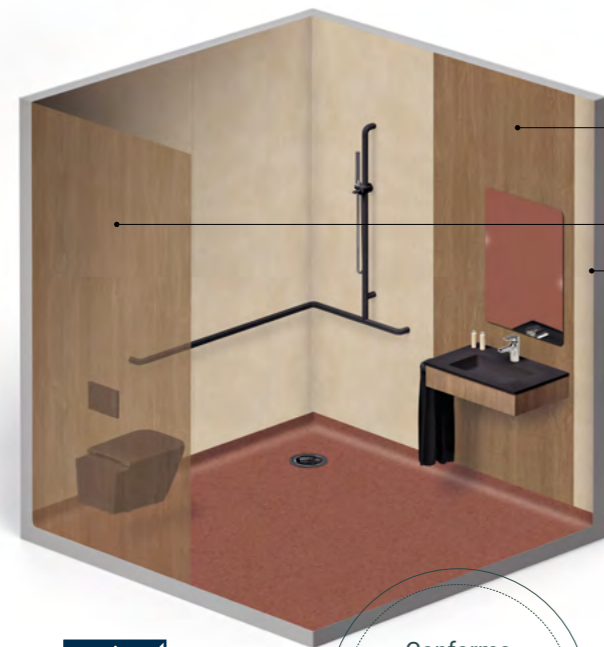
Soft brick and warm wood tones create a warm and comfortable space. For easy navigation, clear contrasts in colour and texture divide the wetroom into distinct areas, making it perfect for people living with dementia.





# NURTURING EARTH: HOW TO INSTALL IT AND WHAT YOU WILL NEED

Create a reassuring, home-like space using familiar materials such as wood. Help users find their bearings with clearly defined zones and wall coverings to highlight different usage areas within the wetroom.

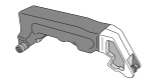


Use strips of 100 cm width or less to designate separate zones  
Leave at least 10 cm between the weld and the corner

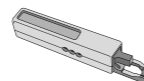
Walls can be covered with a full-height, vertical-installation technique. Apply a 1-metre wide strip behind the washbasin and another 1-metre wide strip behind the toilet. A single roll (2 m width) will provide sufficient wall covering for both strips (no material loss).

### RECOMMENDED TOOLS

For perfectly bevelled and welded joints:



Groover with detail nozzle ref. 1258 100



Welder with turbo detail nozzle ref. 1258 102



Dementia-friendly design

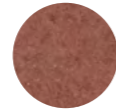
Conforms with Tarkett wetroom concept specifications

### COMPONENTS:

AQUARELLE WALL HFS Rustic Velvet Taupe 3942 088



GRANIT SAFE.T Soft Brick 21153 633



Rectangular Vinyl Plus Siphon



AQUARELLE WALL HFS Oak Tree Warm Brown 3942 105



Welding Rod Oak Tree Warm Brown 24806 236



# ALTERNATIVE DESIGNS TO CREATE FUNCTIONAL ZONING

Bring energy to the space and lift the spirit by using lively, animated designs to create structure.

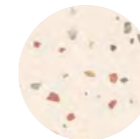
Accessories

Stainless Steel Drop Grid 26651 001



Walls

AQUARELLE WALL HFS Gemstone Pastel 3942 109



AQUARELLE WALL HFS Luxury Concrete Golden 3942 110



Floor

AQUA MULTISAFE Oak Tree Safe Natural 25912 006



Copper tones and golden shades create an elegant, intimate space for peaceful interludes.

Accessories

Grey Drop Grid 26657 003

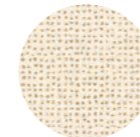


Walls

AQUARELLE WALL HFS PalmLeaf Copper 3942 083

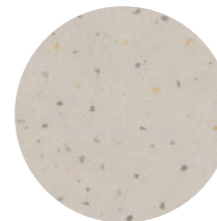


AQUARELLE WALL HFS Rustic Velvet Copper 3942 119



Floor

AQUA MULTISAFE Terrazzo Safe Gold & Silver 26544 010



Generate a soothing, relaxed feel with the simple appeal of plants in calming shades.

Accessories

Standard White 1417 001



Walls

AQUARELLE WALL HFS BananaLeaf Beige 3942 099



AQUARELLE WALL HFS Concrete Beige 3942 095



Floor

AQUA MULTISAFE Oak Tree Safe Warm Brown 25912 007





# MINERAL VITALITY

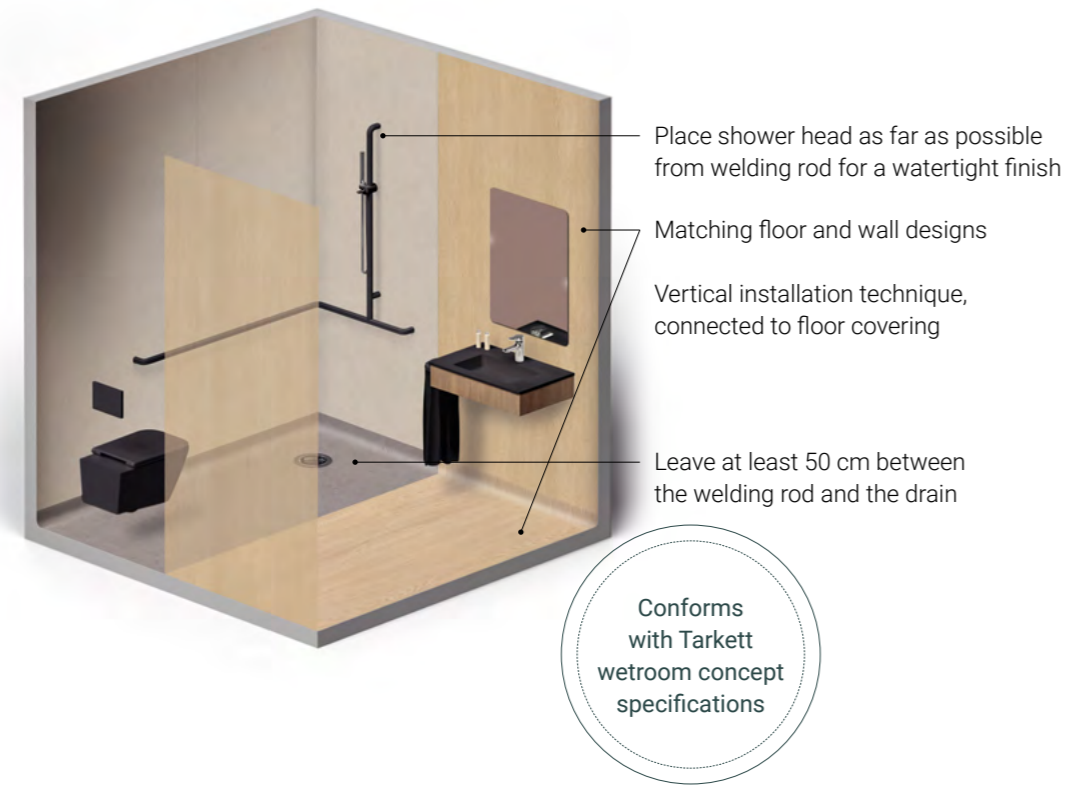
Natural wood and raw concrete offer contrasting texture and colour in this configuration. Uninterrupted coverings from wall to floor produces clean lines for an unconventional yet elegant finish.






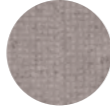




# MINERAL VITALITY: HOW TO INSTALL IT AND WHAT YOU WILL NEED

Harness rich, natural-looking materials to create an exclusive, immersive look for both walls and floor, finished off by stylish accessories. Contrasts and textures can divide the space into separate zones, each with its own ambiance.








## COMPONENTS:

<p>WALL</p> <p>AQUARELLE WALL HFS Oak Tree Natural 3942 104</p> <p>AQUARELLE WALL HFS Concrete Cool Grey 3942 094</p>	  	<p>FLOORS</p> <p>AQUA MULTISAFE Oak Tree Safe Natural 25912 006</p> <p>AQUA MULTISAFE Concrete Safe Cool Grey 26544 002</p>	  	<p>ACCESSORIES</p> <p>Black Drop Grid 26657 002</p> <p>Welding Rod Oak Tree Natural 24806 204</p>	  
---------------------------------------------------------------------------------------------------------------------------------------	--------------------------------------------------------------------------------------------------------------------------------------------------------------------------------	---------------------------------------------------------------------------------------------------------------------------------------------	--------------------------------------------------------------------------------------------------------------------------------------------------------------------------------	-------------------------------------------------------------------------------------------------------------------	------------------------------------------------------------------------------------------------------------------------------------------------------------------------------------




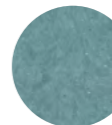
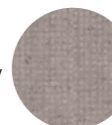
# DIFFERENT IDEAS FOR A SPACE-WITHIN-A-SPACE

A contemporary touch lending shape and warmth to a beautifully balanced space.

<p>ACCESSORIES</p> <p>White Drop Grid 26657 001</p>		<p>WALL</p> <p>AQUARELLE WALL HFS Oak Tree Warm Brown 3942 105</p> <p>AQUARELLE WALL HFS Concrete Mastic 3942 096</p>	  	<p>FLOORS</p> <p>AQUA MULTISAFE Oak Tree Safe Warm Brown 25912 007</p> <p>AQUA MULTISAFE Concrete Safe Chalk 26544 001</p>	  
-------------------------------------------------------------	-------------------------------------------------------------------------------------	---------------------------------------------------------------------------------------------------------------------------------------	--------------------------------------------------------------------------------------------------------------------------------------------------------------------------------	------------------------------------------------------------------------------------------------------------------------------------------------	--------------------------------------------------------------------------------------------------------------------------------------------------------------------------------



Try a fresh perspective and mindset with energetic and bold colours inspired by concrete.

<p>ACCESSORIES</p> <p>Black Drop Grid 26657 002</p>		<p>WALL</p> <p>AQUARELLE WALL HFS Uni Aqua 3942 116</p> <p>AQUARELLE WALL HFS Concrete Cool Grey 3942 094</p>	  	<p>FLOORS</p> <p>GRANIT SAFE.T Soft Aqua 21153 523</p> <p>AQUA MULTISAFE Concrete Safe Cool Grey 26544 002</p>	  
-------------------------------------------------------------	---------------------------------------------------------------------------------------	-------------------------------------------------------------------------------------------------------------------------------	------------------------------------------------------------------------------------------------------------------------------------------------------------------------------------	--------------------------------------------------------------------------------------------------------------------------------	------------------------------------------------------------------------------------------------------------------------------------------------------------------------------------



A mood of pure minerality whose elemental proportions lift the spirit and evoke a feeling of inner strength.

<p>ACCESSORIES</p> <p>Black Drop Grid 26657 002</p>		<p>WALL</p> <p>AQUARELLE WALL HFS Royal Marble Mid Grey 3942 120</p> <p>AQUARELLE WALL HFS Concrete Cool Grey 3942 094</p>	  	<p>FLOORS</p> <p>AQUA MULTISAFE Marble Safe Grey 26544 005</p> <p>AQUA MULTISAFE Concrete Safe Cool Grey 26544 002</p>	  
-------------------------------------------------------------	---------------------------------------------------------------------------------------	--------------------------------------------------------------------------------------------------------------------------------------------	------------------------------------------------------------------------------------------------------------------------------------------------------------------------------------	----------------------------------------------------------------------------------------------------------------------------------------	------------------------------------------------------------------------------------------------------------------------------------------------------------------------------------





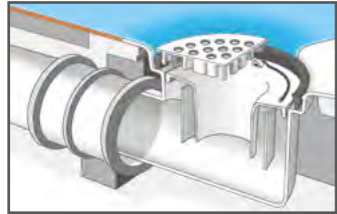
# INSTALLATION: KEY STEPS

These are the main steps for installing a complete wetroom including the floor, walls and major accessories. For a full list of accessories, please refer to the pages that follow this section.

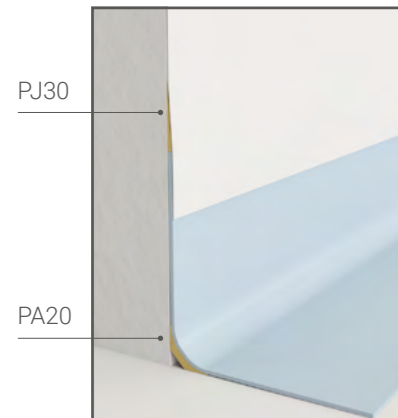
Comprehensive installation instructions are available on our website.

The wetroom installation must be undertaken by qualified installers and conform with Tarkett wetroom concept specifications. We offer training for installation – please feel free to contact our training teams to book a session.

## 1 Drain installation (plumber)



## 2 & 5 Coving & junction-profile installation



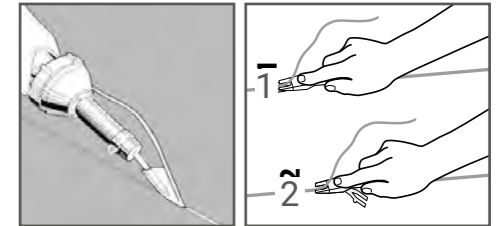
## 3 Threshold installation



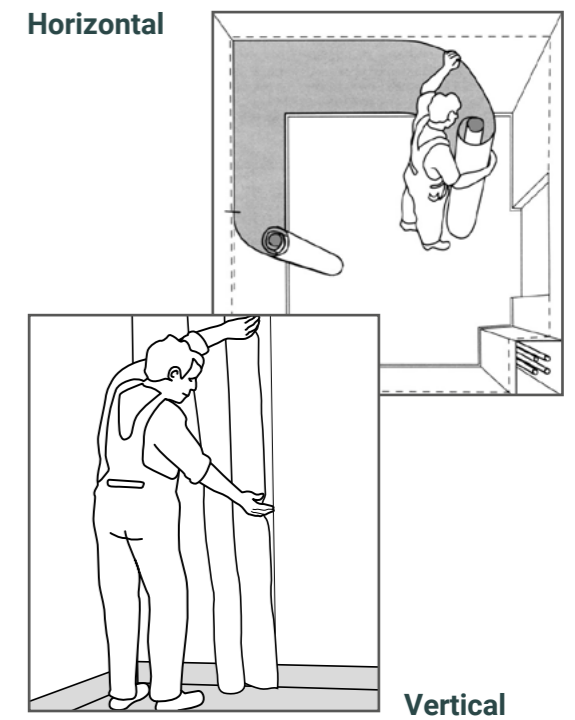
## 4 Floorcovering installation



## 6 Hot welding with PVC nozzle and Tarkett welding rod



## 7 Wallcovering installation



## 8 Hot welding with Tarkett triangular nozzle and Tarkett welding rod

### TECHNICAL ASSISTANCE

If your business has no experience in installing our wetroom concept, please contact your local Tarkett sales office for assistance or to book on-site training and/or support for your project.



# DISCOVER A COMPLETE SOLUTION OF TOOLS AND ACCESSORIES FOR A WATERTIGHT AND HYGIENIC FINISH



# WETROOM CONCEPT ACCESSORIES

Tarkett provides a wide range of accessories for your wetroom installation.

## DRAINS AND GRATINGS

Vertical				
<b>Siphon brage 75</b> Ø150 1416 005	<b>Siphon brage 50</b> Ø150 1416 004	<b>Siphon dusch brunn</b> Ø150 1416 001	<b>Stainless steel siphon - inox 40</b> Ø130 1416 007	<b>Safe</b> Ø150 1416 014

Horizontal				
<b>Freja 50</b> Ø150 1416 002	<b>Minimax s-series</b> Ø215 1416 013	<b>Siphon for renovation - minimax 40</b> Ø130 1416 010	<b>Siphon for renovation - minimax 50</b> Ø130 1416 006	<b>Siphon oden 75 NEW</b> Ø150 1416 015

Rectangular – Dimensions: Length: 600, 900 mm / Width: 130 mm			
When choosing a gully, three factors to consider are drain type (horizontal or vertical), diameter and outflow.			
<b>Chess - inox grating 900 mm</b> 26656 002	<b>Chess - inox grating 600 mm</b> 26655 002	<b>Chess - inox grating 600 mm</b> 26655 002	<b>Chess - inox grating 600 mm</b> 26655 002
<b>Side low outlet</b> Siphon vinyl plus Ø50 side 900 mm	<b>Side outlet</b> Siphon vinyl plus Ø75 side 600 mm	<b>Side outlet</b> Siphon vinyl plus Ø50 side 600 mm	<b>Side outlet</b> Siphon vinyl plus Ø50 side 600 mm
26697 002	26689 002	26687 002	26687 002

PVC				
<b>Art deco Ø130</b> Black <b>NEW</b> 26659 002	<b>Art deco Ø130</b> Grey <b>NEW</b> 26659 003	<b>Art deco Ø130</b> White 26658 001	<b>Standard</b> Ø150 1417 001	<b>Hole for pipe</b> Ø150 26660 001

PVC		Stainless Steel		
<b>Grating matt PVC drop Ø150</b> Black <b>NEW</b> 26657 002	<b>Grating matt PVC drop Ø150</b> Grey <b>NEW</b> 26657 003	<b>Grating matt PVC drop Ø150</b> White 26657 001	<b>Drop</b> Ø130 26651 001 Ø150 26650 001 GRID SR 150 26652 002	<b>Art deco</b> Ø130 1417 013 Ø150 1417 010

**Welding rods**  
In many matching or contrasting colours

**Flexible junction profiles**  
Reduce thickness difference between floor and wall

**Cove formers**  
Different dimensions and with self-adhesive option

**Drains, gratings and water traps**  
Plastic and stainless steel, round and rectangular shapes, all adapted for various usages

**Threshold transitions**  
To prevent water from flowing elsewhere

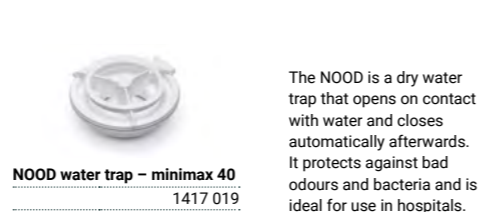


# WETROOM CONCEPT ACCESSORIES

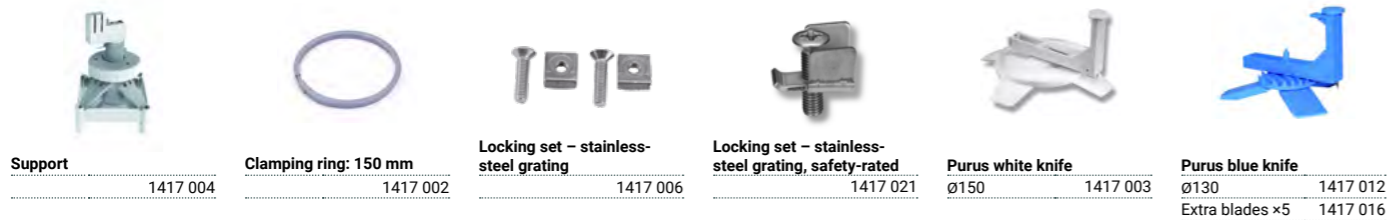
## Water Traps



## The NOOD Water Trap

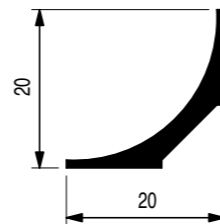


## Purus Accessories



## COVER FORMERS

- **PA15**  
For enhanced hygiene in wall corners  
PA15-PVC (15 × 15 mm) – ref. 2661 7001  
PA15-NON-PVC – ref. 580101 000
- **PA20 SA NEW**  
Self-adhesive cover former for quicker installation  
PA20 SA (20 × 20 mm) – ref. 1441 001
- **Aquasens tape NEW**  
Pre-cut double sided tape for coving – 25 m length 160 mm height – ref. 2666 7000
- **PA20 & PA30**  
For added strength at the most vulnerable point between wall and floor  
PA20-PVC (20 × 20 mm) – ref. 1441 000  
PA20-NON-PVC – ref. 580102 000  
PA30-PVC (30 × 30 mm) – ref. 1442 000  
PA30-NON-PVC – ref. 580104 000



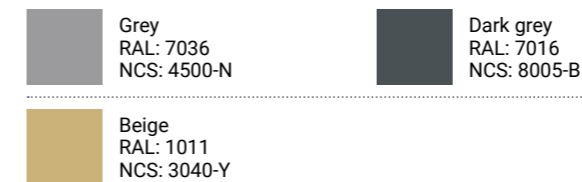
## WATERPROOF PIPE COLLARS



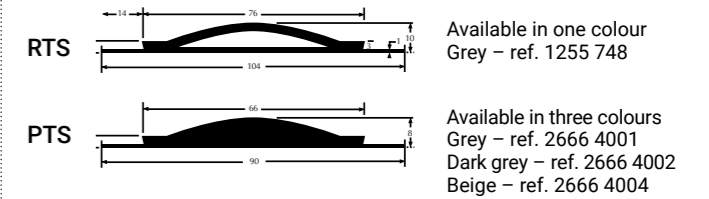
Ø15/19 mm	1420 003
Ø18/22 mm	1420 004
Ø30/35 mm	1420 007
Ø35/42 mm	1420 008

## THRESHOLD TRANSITIONS

- Available in flexible rubber (RTS)
- Available in rigid PVC (PTS)



## References

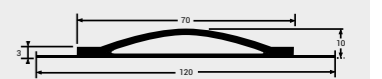


## Flexible Threshold (WTS)

- Flexible
- Can be welded
- Easier for wheelchairs
- Reduce door fitting → reduce installation time
- All the advantages of PVC and rubber without the drawbacks

## NEW PVC FLEXIBLE THRESHOLD WTS1

Available in one colour Grey Clay  
L 2 m × W 7/12 cm × H 1 cm  
ref. 26666 000

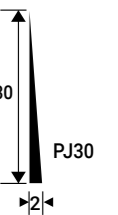


## FLEXIBLE JUNCTION PROFILES

Designed to ensure a perfect watertight seal between covered floor covering and wall covering.

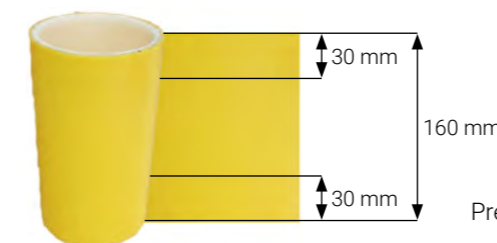
## References

- PJ30 PVC (30 mm) – ref. 1418 001
- PJ30 NON-PVC (30 mm) – ref. 580105 000
- PJ65 PVC (65 mm) – ref. 2666 1001
- PJ65 NON-PVC (65 mm) – ref. 580106 000
- NEW ■ PJ30 SA (30 mm) Junction profile 30 self adhesive – ref. 1418 003

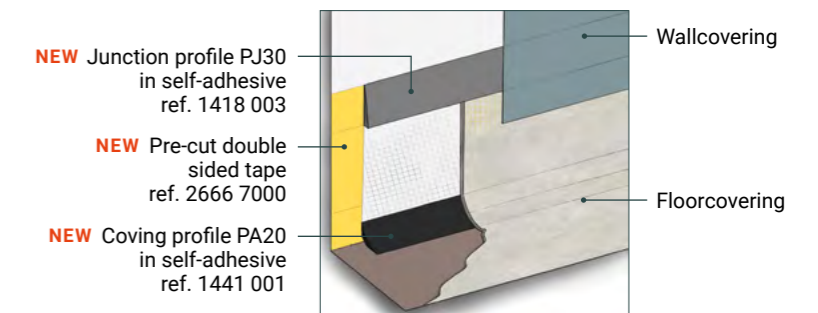


## NEW FOCUS ON OUR NEW COVING INSTALLATION SYSTEM

- Unique, market-first solution
- Faster, hassle-free installation
- Glueless and odourless
- No need for special tools
- No mess
- No added costs



Pre-cut double sided tape 160 mm – 2666 7000





# A GUIDE TO ACCESSORIES

When choosing a gully, three factors to consider are drain type (vertical or horizontal), diameter and outflow. These factors are determined by the architect based on customer needs and sub-floor type, whether for renovation or new build.

Drain	SAP code	Diameter (mm)	Features	Integrated accessoires	Other compatible accessories in the range	SAP code					
Freja 50 – horizontal	1416 002	150	Bigger gully with 50 mm outlet. General purpose with no specific site constraints other than the side outlet.	Included: Stainless-steel grating: drop 150 Stainless-steel grating: art deco 150 Stainless-steel grating: SR 150	Plastic grating – standard 150	1417 001					
					Plastic grating – drop 150	26657 001/26657 002/26657 003					
					Plastic grating – hole for pipe 150	26660 001					
					Inox grating – drop 150	26650 001					
					Inox grating – art deco 150	1417 010					
					Inox grating – SR 150	26652 002					
					Water trap RAN plastic	1417 005					
					Purus knife 150	1417 003					
					NOOD water trap	1417 024					
					Clamping ring	1417 002					
					Plastic grating – standard 150	1417 001					
					Plastic grating – drop 150	26657 001/26657 002/26657 003					
					Plastic grating – hole for pipe 150	26660 001					
					Inox grating – drop 150	26650 001					
					Inox grating – art deco 150	1417 010					
Inox grating – SR 150	26652 002										
Water trap RAN plastic	1417 005										
Purus knife 150	1417 003										
NOOD water trap	1417 024										
Clamping ring	1417 002										
Brage 75 – vertical	1416 005	150	75 mm diameter outlet. Maximises flow for vertical outlets.	Included: Clamping ring Plastic grating: drop 150 white Standard water trap	Plastic grating – standard 150	1417 001					
					Plastic grating – drop 150	26657 001/26657 002/26657 003					
					Plastic grating – hole for pipe 150	26660 001					
					Inox grating – drop 150	26650 001					
					Inox grating – art deco 150	1417 010					
					Inox grating – SR 150	26652 002					
					Water trap RAN plastic	1417 005					
					Purus knife 150	1417 003					
					NOOD water trap	1417 024					
					Clamping ring	1417 002					
					Plastic grating – standard 150	1417 001					
					Plastic grating – drop 150	26657 001/26657 002/26657 003					
					Plastic grating – hole for pipe 150	26660 001					
					Inox grating – drop 150	26650 001					
					Inox grating – art deco 150	1417 010					
Inox grating – SR 150	26652 002										
Water trap RAN plastic	1417 005										
Purus knife 150	1417 003										
NOOD water trap	1417 024										
Clamping ring	1417 002										
Brage 50 – vertical	1416 004	150	50 mm diameter. Compact design ensuring fast flow for vertical outlets.	Included: Clamping ring Plastic grating: drop 150 white Standard water trap	Plastic grating – standard 150	1417 001					
					Plastic grating – drop 150	26657 001/26657 002/26657 003					
					Plastic grating – hole for pipe 150	26660 001					
					Inox grating – drop 150	26650 001					
					Inox grating – art deco 150	1417 010					
					Inox grating – SR 150	26652 002					
					Water trap RAN plastic	1417 005					
					Purus knife 150	1417 003					
					NOOD water trap	1417 024					
					Clamping ring	1417 002					
					Plastic grating – standard 150	1417 001					
					Plastic grating – drop 150	26657 001/26657 002/26657 003					
					Plastic grating – hole for pipe 150	26660 001					
					Inox grating – drop 150	26650 001					
					Inox grating – art deco 150	1417 010					
Inox grating – SR 150	26652 002										
Water trap RAN plastic	1417 005										
Purus knife 150	1417 003										
NOOD water trap	1417 024										
Clamping ring	1417 002										
Stainless steel siphon inox 40 – vertical	1416 007	130	For use in secure environments, such as prisons or psychiatric hospitals.	3 screws for clamping ring 1 screw for grating Grating	NA	NA					
					Plastic grating – standard 150	1417 001					
					Plastic grating – drop 150	26657 001/26657 002/26657 003					
					Plastic grating – hole for pipe 150	26660 001					
					Inox grating – drop 150	26650 001					
					Inox grating – art deco 150	1417 010					
					Inox grating – SR 150	26652 002					
					Purus knife 150	1417 003					
					NOOD water trap	1417 024					
					Clamping ring	1417 002					
					Plastic grating – standard 150	1417 001					
					Plastic grating – drop 150	26657 001/26657 002/26657 003					
					Plastic grating – hole for pipe 150	26660 001					
					Inox grating – drop 150	26650 001					
					Inox grating – art deco 150	1417 010					
Inox grating – SR 150	26652 002										
Water trap RAN plastic	1417 005										
Purus knife 150	1417 003										
NOOD water trap	1417 024										
Clamping ring	1417 002										
Dusch brunn – vertical	1416 001	150	The outlet must be pushed into the gully. Extremely compact design. Incompatible with NOOD water trap.	Included: Clamping ring Plastic grating: standard 150 Water trap	Plastic grating – standard 150	1417 001					
					Plastic grating – drop 150	26657 001/26657 002/26657 003					
					Plastic grating – hole for pipe 150	26660 001					
					Inox grating – drop 150	26650 001					
					Inox grating – art deco 150	1417 010					
					Inox grating – SR 150	26652 002					
					Purus knife 150	1417 003					
					NOOD water trap	1417 024					
					Clamping ring	1417 002					
					Plastic grating – standard 150	1417 001					
					Plastic grating – drop 150	26657 001/26657 002/26657 003					
					Plastic grating – hole for pipe 150	26660 001					
					Inox grating – drop 150	26650 001					
					Inox grating – art deco 150	1417 010					
					Inox grating – SR 150	26652 002					
Water trap RAN plastic	1417 005										
Purus knife 150	1417 003										
NOOD water trap	1417 024										
Clamping ring	1417 002										
NEW Oden 75 – horizontal	1416 015	150	Maximises flow for horizontal outlets.	Included: Grating Water trap Automatic clamping ring	Plastic grating – standard 150	1417 001					
					Plastic grating – drop 150	26657 001/26657 002/26657 003					
					Plastic grating – hole for pipe 150	26660 001					
					Inox grating – drop 150	26650 001					
					Inox grating – art deco 150	1417 010					
					Inox grating – SR 150	26652 002					
					Water trap RAN plastic	1417 005					
					Purus knife 150	1417 003					
					NOOD water trap	1417 024					
					Clamping ring	1417 002					
					Purus knife 130	1417 012					
					Plastic grating – art deco 130	26659 003/26659 002/26658 001					
					Inox grating – drop 130	26651 001					
					Inox grating – art deco 130	1417 013					
					NOOD water trap – minimax	1417 019					
Plastic grating – art deco 130	26659 003/26659 002/26658 001										
Inox grating – art deco 130	1417 013										
Inox grating – drop 130	26651 001										
Purus knife 130	1417 012										
Drain for renovation – minimax 4	1416 010	130	Smaller format without water trap. Ideal as part of a system with a separate drain connected to a main outlet.	Included: Clamping ring Plastic grating	S-series grating – minimax plastic	26660 002					
					S-series grating – minimax stainless steel	26650 002					
					Plastic grating – standard 150	1417 001					
					Plastic grating – drop 150	26657 001/26657 002/26657 003					
					Plastic grating – hole for pipe 150	26660 001					
					Inox grating – drop 150	26650 001					
					Inox grating – art deco 150	1417 010					
					Inox grating – SR 150	26652 002					
					Water trap RAN plastic	1417 005					
					Purus knife 150	1417 003					
					NOOD water trap	1417 024					
					Clamping ring	1417 002					
					Drain for renovation – minimax 50	1416 006	130	Reduced height perfect for where space is limited, such as in renovations.	Included: Clamping ring Plastic grating NOOD water trap	Plastic grating – standard 150	1417 001
										Plastic grating – drop 150	26657 001/26657 002/26657 003
										Plastic grating – hole for pipe 150	26660 001
Inox grating – drop 150	26650 001										
Inox grating – art deco 150	1417 010										
Inox grating – SR 150	26652 002										
Water trap RAN plastic	1417 005										
Purus knife 150	1417 003										
NOOD water trap	1417 024										
Clamping ring	1417 002										
Minimax s-series	1416 013	215	Solution solving. Ideal for renovation project. Save time in floor preparation and installation.	Included: Inox-steel clamping ring No gratings included						S-series grating – minimax plastic	26660 002
										S-series grating – minimax stainless steel	26650 002
										Plastic grating – standard 150	1417 001
										Plastic grating – drop 150	26657 001/26657 002/26657 003
										Plastic grating – hole for pipe 150	26660 001
					Inox grating – drop 150	26650 001					
					Inox grating – art deco 150	1417 010					
					Inox grating – SR 150	26652 002					
					Water trap RAN plastic	1417 005					
					Purus knife 150	1417 003					
					NOOD water trap	1417 024					
					Clamping ring	1417 002					
					Safe	1416 014	150	Compact design with small outlet. Can withstand freezing temperatures, useful in unheated spaces. Ideal as an extra outlet in bathrooms and wetrooms. Not for use in showers or other high-outflow environments.	Included: Odour trap Automatic clamping ring Grating	Clamping ring	1417 002
										Plastic grating – standard 150	1417 001
										Plastic grating – drop 150	26657 001/26657 002/26657 003
Plastic grating – hole for pipe 150	26660 001										
Inox grating – drop 150	26650 001										
Inox grating – art deco 150	1417 010										
Inox grating – SR 150	26652 002										
Water trap RAN plastic	1417 005										
Purus knife 150	1417 003										
NOOD water trap	1417 024										
Clamping ring	1417 002										

# TOOLS REQUIRED

CODE	TYPE OF TOOL	FLOOR	WALL	JANSER	ROMUS
1	Hot air gun	x	x	226 110 000	95 047
2	Corner roller	x	x	224 400 123	95 135
3	Wall groover or adjustable groover		x		95 125
4	Guide rule		x	262 601 000	91 580
5	High speed hot air nozzle	x	x	224 700 300	95 030
5	High speed nozzle	x	x	224 400 300	
5	Tarkett super high speed welding nozzle (ref. 1258 012)		x		
6	Quarter moon knife	x	x	262 621 000	95 140
7	Adjustable trimmer	x	x	262 625 000	95 150
8	Traditional blowtorch	x	x	224 962 000	95 074
8	("welder")	x	x	224 818 000	95 080
9	or special wall seam plane (studded flooring)	x	x	262 626 500	95 172
9	or trimming tool slim		x	262 609 100	
9	or "slim" or "trim" trimmer		x	262 609 300	
10	90° angle template	x			95 445
10	and flat angle template for coving	x			95 446
11	Scriber or		x	222 430 000	95 430
11	combined scriber / marking gauge		x	262 130 000	
12	Swan neck nozzle or	x		224 810 040	95 039
12	Corner finishing nozzle	x		224 810 050	
13	Trimming gouge	x		262 610 000	95 160
14	Cork wedge / squeegee	x	x	262 380 000	93 145
15	Stainless-steel trowel		x		93 150
16	Mozart knife	x	xx	262 636 000	95 130

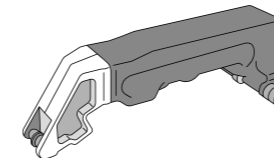
## SPECIAL TOOLS

### FOR GROOVING: NEW

**Master turbo groover**  
ref. 1258 100

**Master turbo groover blades (2 pcs)**  
ref. 1258 101

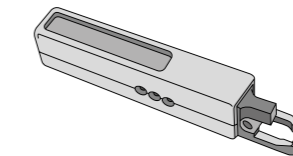
- Fast grooving
- Secure grooving: consistent depth of grooving regardless of pressure applied



### FOR WALLCOVERING NEW WELDING:

**Turbo detail nozzle**  
ref. 1258 102

- Easy, safe wall welding
- No risk of burning the wall covering



### FOR HORIZONTAL NEW INSTALLATION OF WALLCOVERING:

**Wall unroller**  
ref. 1562 010

- Fast, safe installation
- Up to 20% less installation time
- Less muscle fatigue for installers



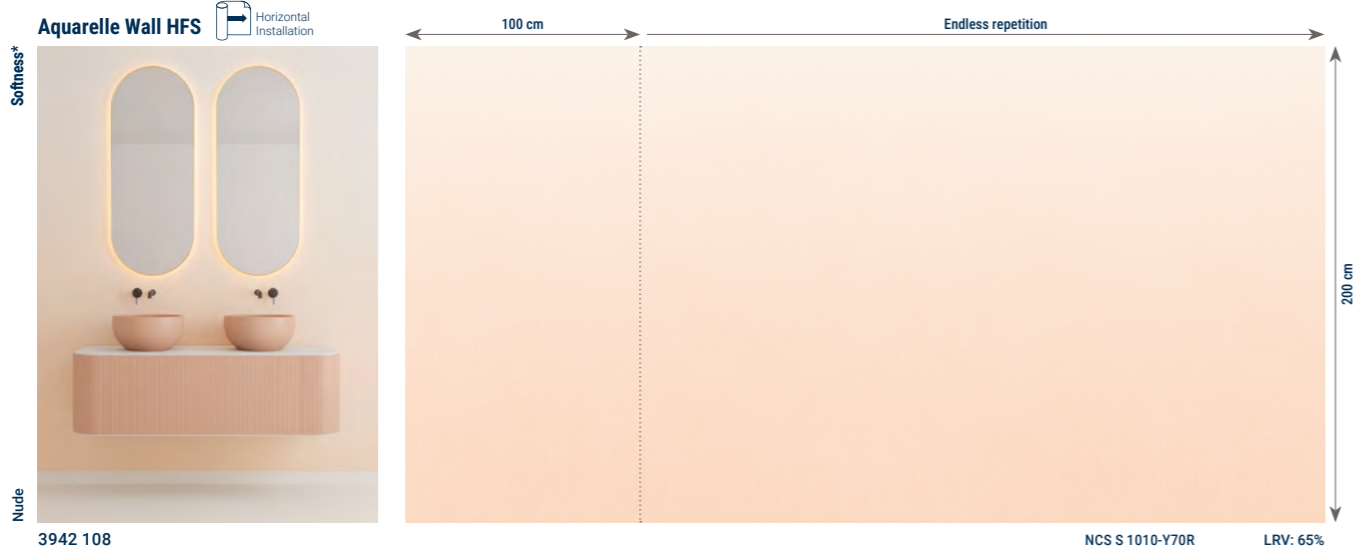
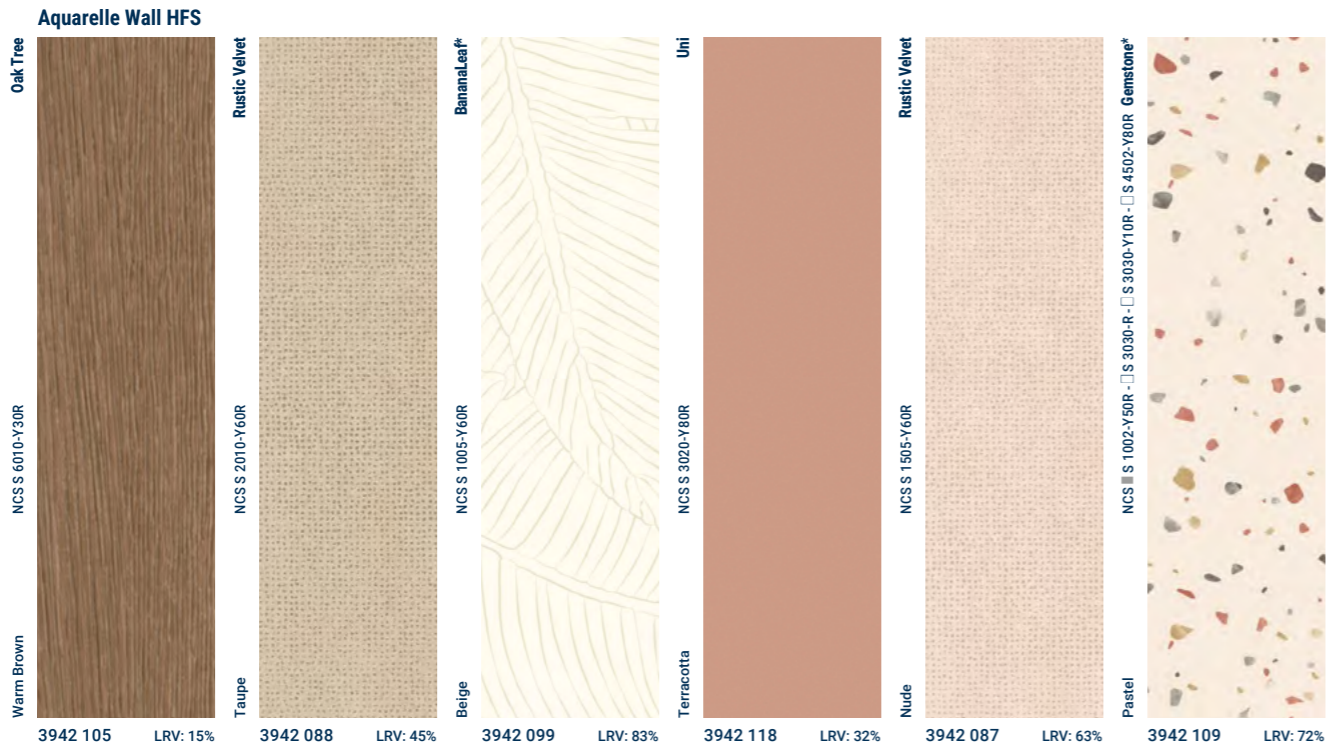
## RECOMMENDED ADHESIVES

Tarkett regularly tests the main adhesives on the market to check that they are compatible with its products. The manufacturer is responsible for the quality of the adhesives and the installer for their use according to the manufacturer's instructions.

Acrylic adhesive should be applied using a fine-toothed spatula TKB A4 (d.p.t 200 . 250 g/m<sup>2</sup>) for Aquarelle Wall HFS and TKB A2 (d.p.t environ 300 g/m<sup>2</sup>) for Multisafe Granit, Granit Safe.T and Multisafe Optima. Consideration should be given to the local climate in relation to tack time, drying etc.

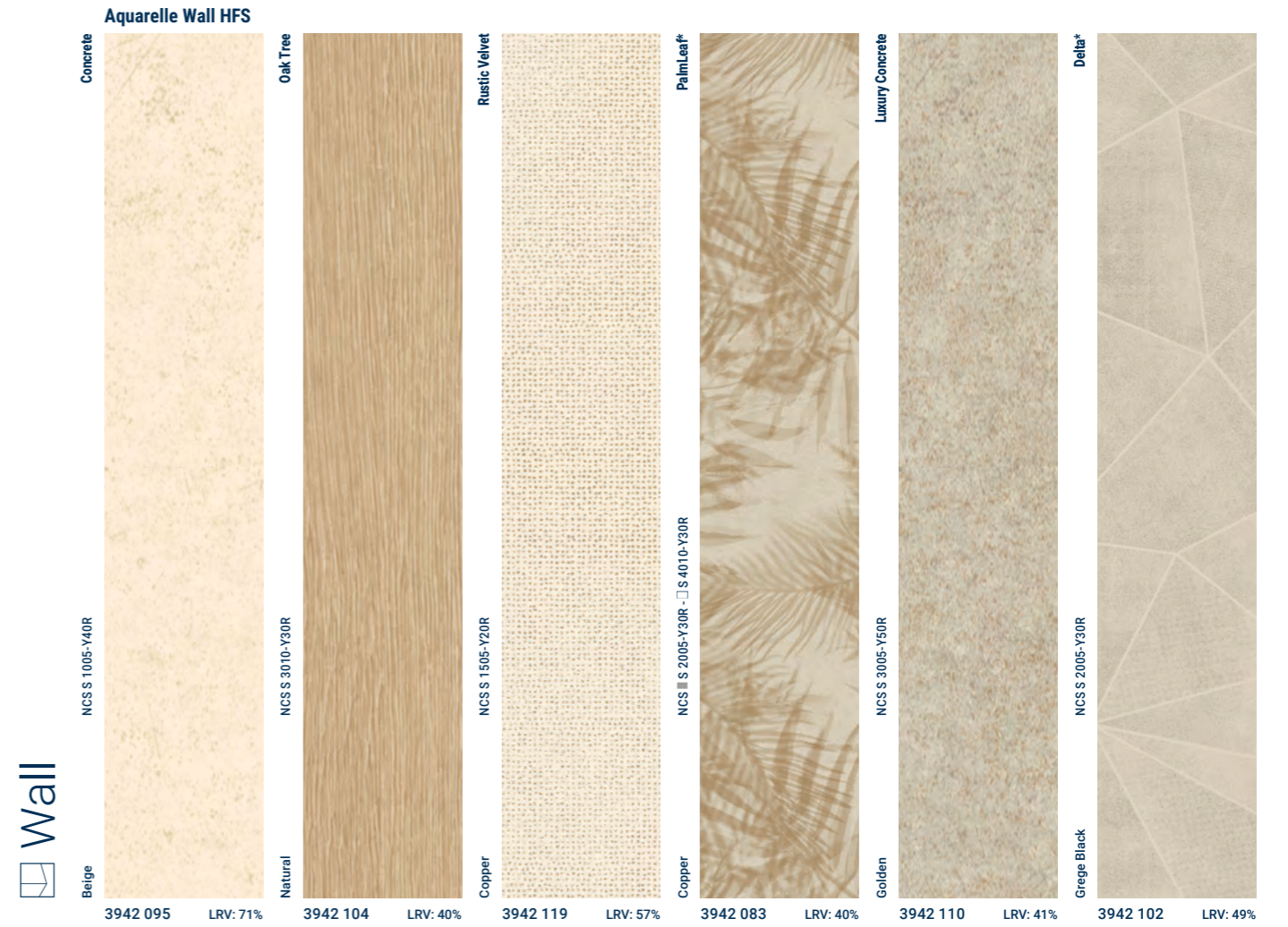


# DESIGN OVERVIEW



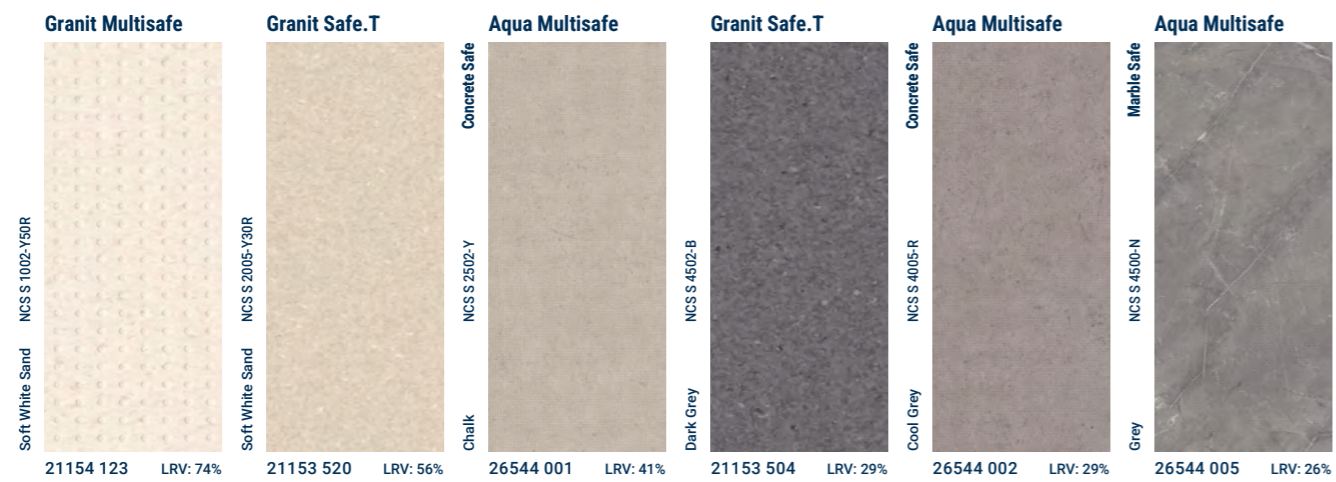
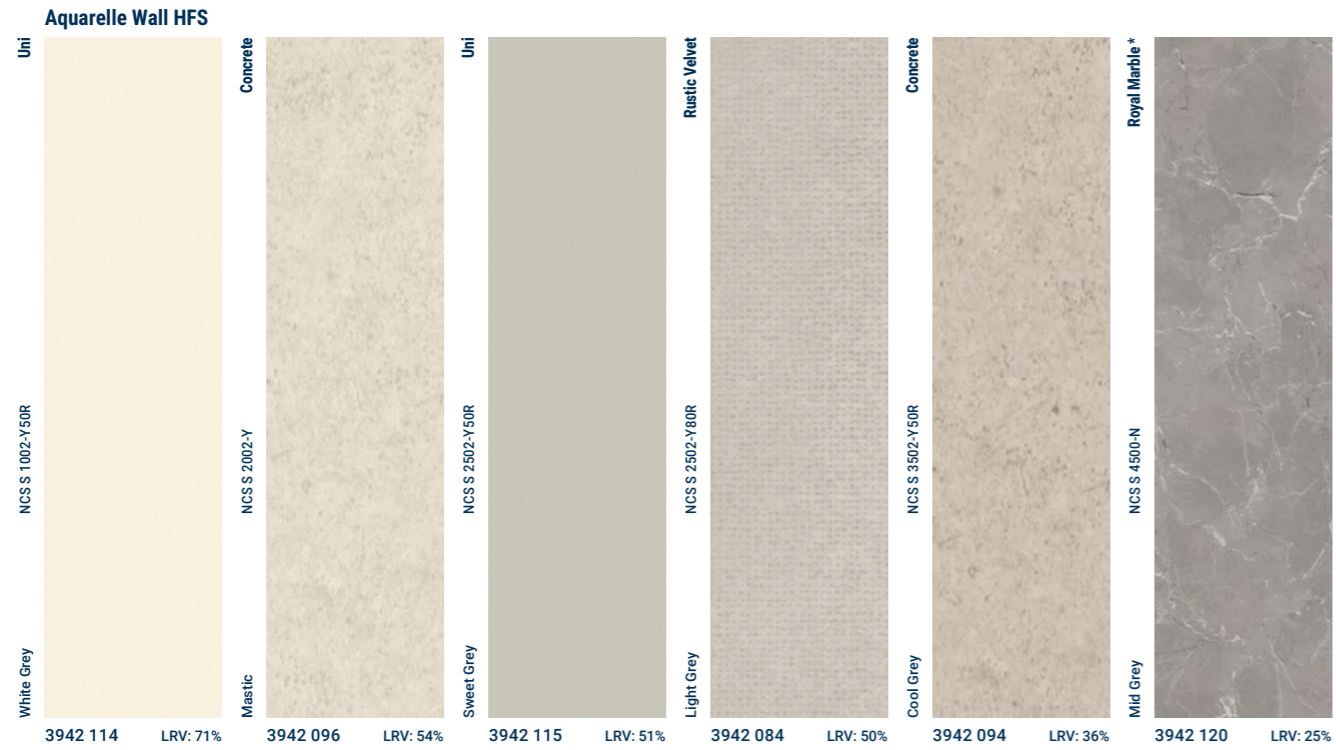
■ Background / □ Pattern

\* Patterns do not match between rolls.



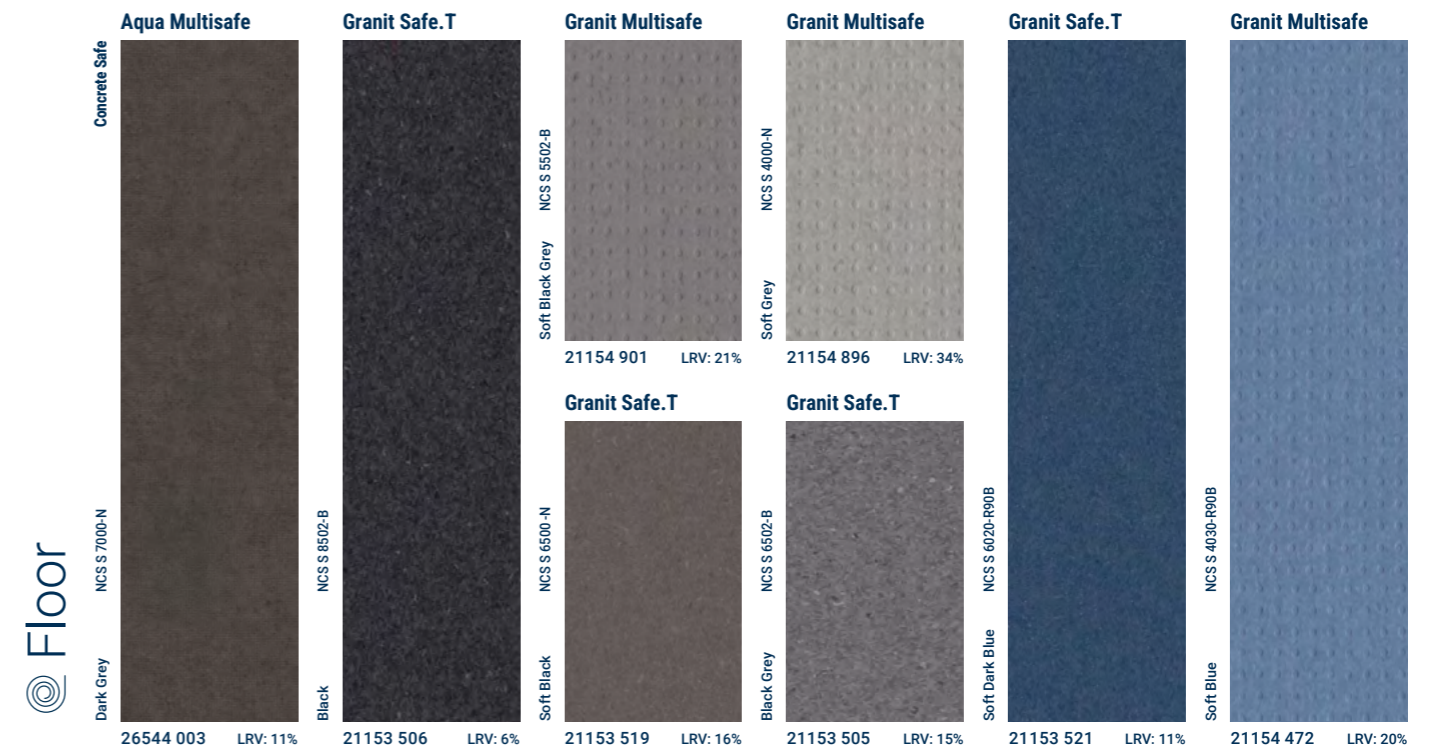
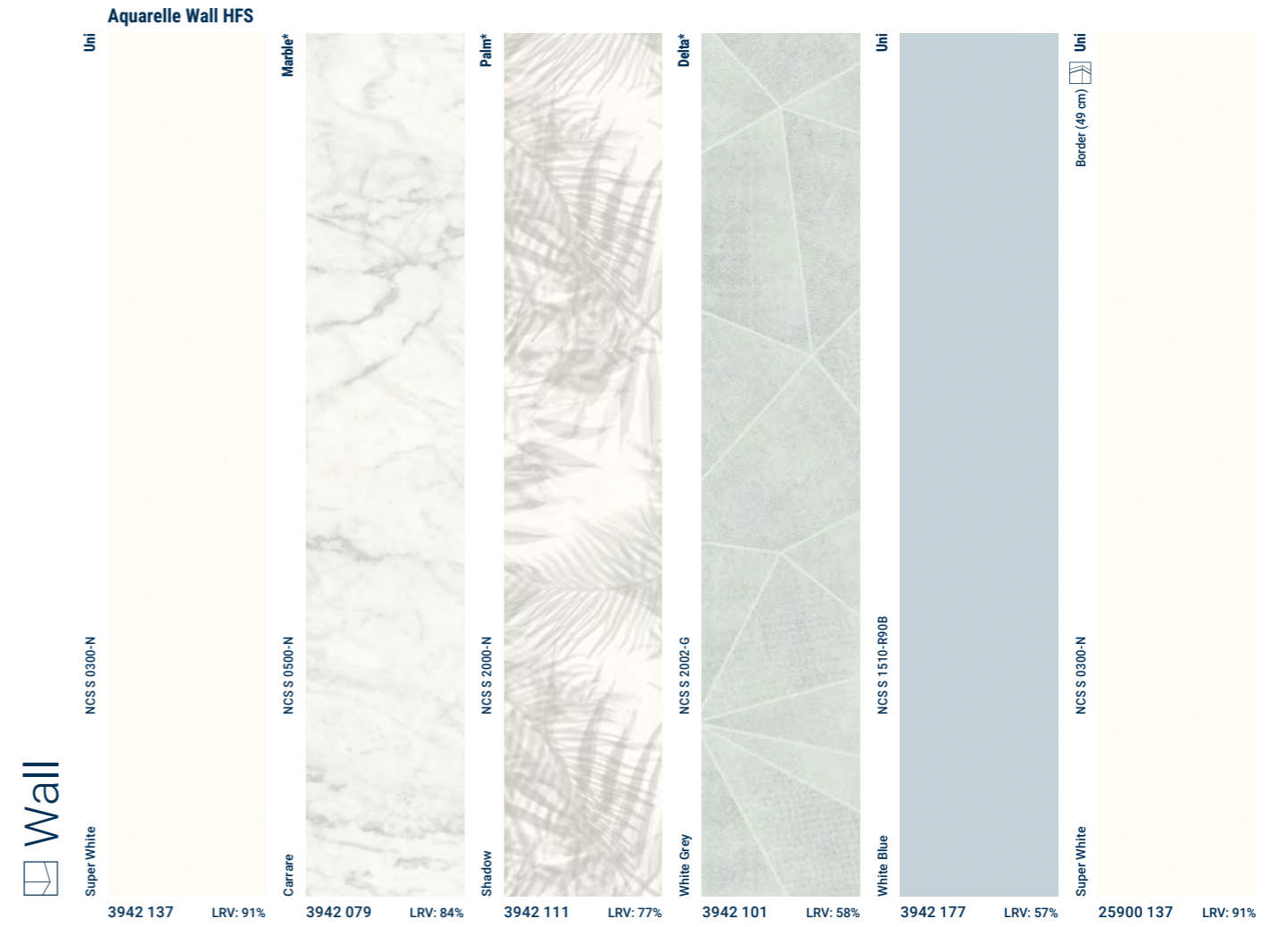


# DESIGN OVERVIEW



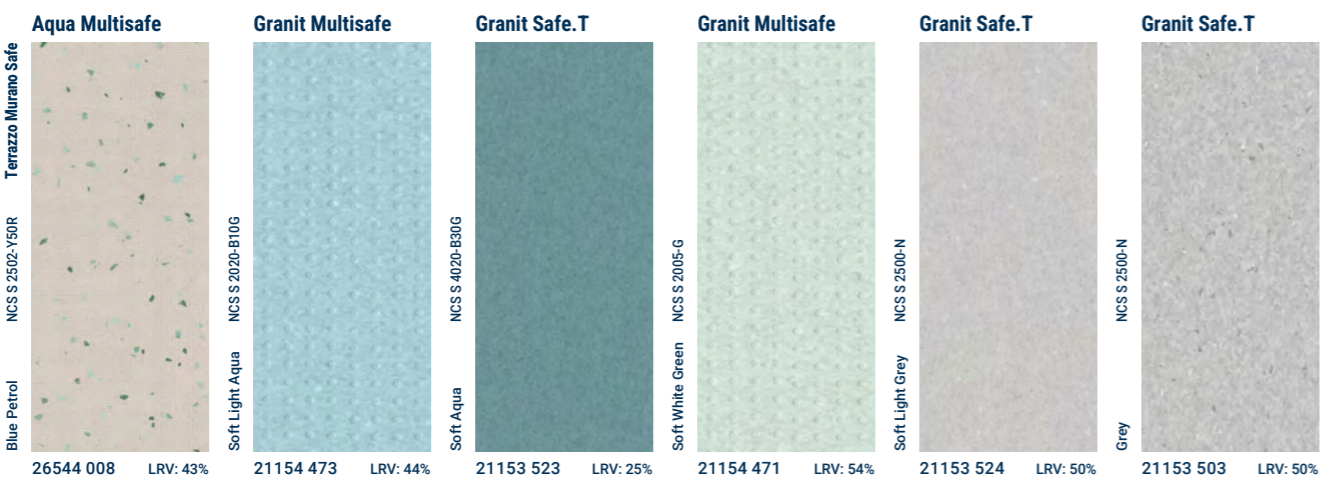
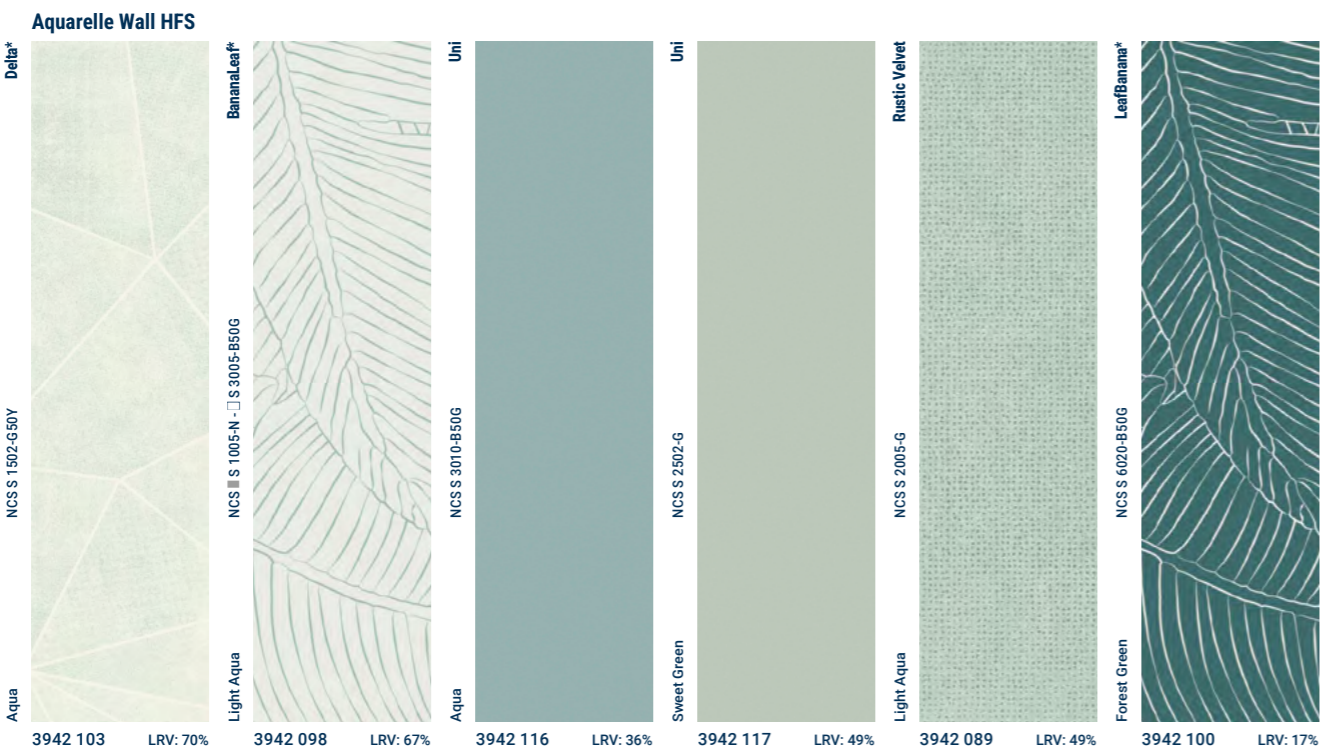
■ Background / □ Pattern

\* Patterns do not match between rolls.





# DESIGN OVERVIEW



■ Background / # Pattern

\* Patterns do not match between rolls.

# TECHNICAL DATA

TECHNICAL DATA	STANDARD	AQUARELLE WALL HFS	GRANIT MULTISAFE	GRANIT SAFE.T	AQUA MULTISAFE
<b>Classification</b>	<b>Norm</b>	<b>Tarkett Value</b>	<b>Tarkett Value</b>	<b>Tarkett Value</b>	<b>Tarkett Value</b>
Classification	EN 233	Heterogeneous vinyl compact wall covering	-	-	-
	ISO 10581	-	Homogeneous single layered vinyl flooring with studded surface	-	-
	ISO 10582	-	-	-	Heterogeneous vinyl floor covering
	EN 13845	-	-	Slip resistant homogeneous vinyl flooring	-
	EN ISO 10874	-	Commercial: 31	Commercial: 34 Industrial: 43	Commercial: 33 Industrial: 42
Wear layer binder content	EN ISO 10581	-	Type I	-	-
	EN ISO 10582	-	-	-	Type I
<b>Technical characteristics</b>	<b>Norm</b>	<b>Tarkett Value</b>	<b>Tarkett Value</b>	<b>Tarkett Value</b>	<b>Tarkett Value</b>
Total thickness	EN ISO 24346	0.92 mm	2.5 mm	2.0 mm	2.0 mm
Total weight	EN ISO 23997	1500 g/m <sup>2</sup>	3010 g/m <sup>2</sup>	2950 g/m <sup>2</sup>	3100 g/m <sup>2</sup>
Wear layer thickness	EN ISO 24340	0.12 mm	2.5 mm	2.0 mm	0.55 mm
Surface treatment	EN ISO 24340	-	-	Safe.T Clean XP™	Top Clean XP™
<b>Performance for CE marking</b>	<b>Norm</b>	<b>Tarkett Value</b>	<b>Tarkett Value</b>	<b>Tarkett Value</b>	<b>Tarkett Value</b>
Declaration of performance	EN 14041	131-0032-DoP-2020-01	0019-0034-DoP-2013-07	0019-0006-DoP-2013-07	0120-096-DoP-2021-05
Reaction to fire	EN 13501-1	Bs2-d0 on any non-metal A1 or A2-s1,d0 class substrate	Class Bfl-s1	Class Bfl-s1	Bfl-s1 glued over any A2fl or A1fl substrate (on cement) Cfl-s1 glued over any derivative wood substrate
	EN 13501-1	-	≥ 8 kW/m <sup>2</sup>	≥ 8 kW/m <sup>2</sup>	-
	EN ISO 11925-2	-	Pass	Pass	-
Static electrical discharge	EN 1815	-	< 2 kV	< 2 kV	≤ 2 kV Antistatic on concrete
Thermal resistance	EN 12667	-	Approx. 0.01 m <sup>2</sup> K/W	Approx. 0.01 m <sup>2</sup> K/W	Approx. 0.02 m <sup>2</sup> K/W
Slip resistance	EN 13893	-	μ ≥ 0.3	μ ≥ 0.3	μ ≥ 0.3
<b>Technical performance</b>	<b>Norm</b>	<b>Tarkett Value</b>	<b>Tarkett Value</b>	<b>Tarkett Value</b>	<b>Tarkett Value</b>
Residual indentation	EN ISO 24343-1	-	Required value: ≤ 0.10 mm Average measured value: 0.02 mm	Required value: ≤ 0.10 mm Average measured value: 0.02 mm	Required value: ≤ 0.10 mm Average measured value: 0.03 mm
Slip resistance	DIN EN 16165 NB.2	-	R10	R10	R10
Bare foot test	DIN EN 16165 NB.1	-	Class C	Class C	Class C
Curl resistance to heat	EN ISO 23999	-	≤  8  mm	≤  8  mm	≤  8  mm
Castor chair test	ISO 4918	-	No damage	No damage	No damage
Light fastness	EN ISO 105-B02	≥ 6	≥ 7	≥ 7	≥ 6
Chemical resistance	EN ISO 26987	Good	Good	Good	Good
Bacteria resistance	ISO 846 Part C	Does not favour growth	Does not favour growth	Does not favour growth	Does not favour growth
Underfloor heating	-	-	Suitable – max. 27°C	Suitable – max. 27°C	Suitable – max. 27°C
Seam strength	EN 684	≥ 150 N / 50 mm	Average value: ≥ 400 N / 50 mm	Average value: ≥ 400 N / 50 mm	Average value: ≥ 240 N / 50 mm
<b>Sustainability performance</b>	<b>Norm</b>	<b>Tarkett Value</b>	<b>Tarkett Value</b>	<b>Tarkett Value</b>	<b>Tarkett Value</b>
Recyclable – contact Tarkett for more info	-	Offcuts	Offcuts & post-use	Offcuts & post-use	Offcuts
Carbon footprint (Cradle-to-Gate, EPD Modules A1-A3)	-	4.44 kg CO <sub>2</sub> eq/m <sup>2</sup>	5.62 kg CO <sub>2</sub> eq/m <sup>2</sup>	5.62 kg CO <sub>2</sub> eq/m <sup>2</sup>	5.95 kg CO <sub>2</sub> eq/m <sup>2</sup>
Total carbon footprint (EPD Modules A-D)	-	6.01 kg CO <sub>2</sub> eq/m <sup>2</sup> /year Landfilling scenario	3.60 kg CO <sub>2</sub> eq/m <sup>2</sup> /year Recycling scenario	3.60 kg CO <sub>2</sub> eq/m <sup>2</sup> /year Recycling scenario	7.78 kg CO <sub>2</sub> eq/m <sup>2</sup> /year Landfilling scenario
Total VOC emissions	EN 16516	Platinum (≤ 10 µg/m <sup>3</sup> after 28 days)	Platinum (≤ 10 µg/m <sup>3</sup> after 28 days)	Platinum I (≤ 10 µg/m <sup>3</sup> after 28 days)	Platinum (≤ 10 µg/m <sup>3</sup> after 28 days)
Formaldehyde emission class	-	E1	E1	E1	E1
<b>Dimensions and Designs</b>	<b>Norm</b>	<b>Tarkett Value</b>	<b>Tarkett Value</b>	<b>Tarkett Value</b>	<b>Tarkett Value</b>
Roll	-	Rolls: 35 m × 2 m Borders: 35 m × 49 cm	25 m × 2 m	25 m × 2 m	23 m × 2 m
Number of designs available	-	32 + 1 Border	8	14	10



# PRODUCT REFERENCES AND CODES

Aquarelle Wall HFS						
Design	Colour	Article code	NCS	LRV (%)	Matching welding rod (uni colour)	Laying direction
BANANALEAF	Beige	3942 099	S 1005-Y60R	83	24806 231	Single direction
	Light Aqua	3942 098	Background: S 1005-N Pattern: S 3005-B50G	66.83	24806 230	Single direction
CONCRETE	Beige	3942 095	S 1005-Y40R	70.76	24806 228	Reverse
	Cool Grey	3942 094	S 3502-Y50R	35.96	24806 117	Reverse
	Mastic	3942 096	S 2002-Y	54.48	24806 201	Reverse
DELTA	Aqua	3942 103	S 1502-G50Y	70.02	24806 235	Single direction
	Grege Black	3942 102	S 2005-Y30R	49.35	24806 234	Single direction
	White Grey	3942 101	S 2002-G	58.15	24806 233	Single direction
FORESTIC	Aqua Green	3942 107	S 4010-B70G	45	24806 238	Single direction
GEMSTONE	Pastel	3942 109	Background: S 1002-Y50R Pattern 1: S 3030-R Pattern 2: S 3030-Y10R Pattern 3: S 4502-Y80R	72.12	24806 202	Reverse
LEAFBANANA	Forest Green	3942 100	S 6020-B50G	17.28	24806 232	Single direction
LUXURY CONCRETE	Golden	3942 110	S 3005-Y50R	41	24806 203	Reverse
MARBLE	Carrare	3942 079	S 0500-N	83.9	24806 124	Single direction
MISTY MOUNTAIN	Grey	3942 106	Background: S 1002-Y80R Pattern 1: S 2002-Y50R Pattern 2: S 2500-N	58	24806 237	Single direction
OAK TREE	Natural	3942 104	S 3010-Y30R	39.62	24806 204	Single direction
	Warm Brown	3942 105	S 6010-Y30R	15.2	24806 236	Single direction
PALM	Shadow	3942 111	S 2000-N	77	24806 206	Single direction
PALMLEAF	Copper	3942 083	Background: S 2005-Y30R Pattern 1: S 4010-Y30R	40.02	24806 222	Single direction
ROYAL MARBLE	Mid Grey	3942 120	S 4500-N	24.63	24806 229	Single direction
RUSTIC VELVET	Copper	3942 119	S 1505-Y20R	57.37	24806 208	Reverse
	Light Aqua	3942 089	S 2005-G	49.35	24806 226	Reverse
	Light Grey	3942 084	S 2502-Y80R	50	24806 223	Reverse
	Nude	3942 087	S 1505-Y60R	63.09	24806 224	Reverse
	Taupe	3942 088	S 2010-Y60R	44.83	24806 225	Reverse
SOFTNESS	Nude	3942 108	S 1010-Y70R	64.68	24806 239	Single direction
UNI	Aqua	3942 116	S 3010-B50G	36	24806 211	Reverse
	Super White	3942 137	S 0300-N	91	24806 017	Reverse
	Sweet Green	3942 117	S 2502-G	49	24806 227	Reverse
	Sweet Grey	3942 115	S 2502-Y50R	51	24806 216	Reverse
	Terracotta	3942 118	S 3020-Y80R	32	24806 217	Reverse
	White Blue	3942 177	S 1510-R90B	57	24806 156	Reverse
	White Grey	3942 114	S 1002-Y50R	71	24806 162	Reverse

Border						
Design	Colour	Article code	NCS	LRV (%)	Matching welding rod (uni colour)	
UNI	Super White	25900 137	S 0300-N	91	24806 017	

Aqua MultiSafe						
Design	Colour	Article code	NCS	LRV (%)	Matching welding rod (uni colour)	
CONCRETE SAFE	Chalk	26544 001	S 2502-Y	41.0	24806 182	
	Cool Grey	26544 002	S 4005-R	29.1	24806 183	
	Dark Grey	26544 003	S 7000-N	10.8	24806 184	
	Grey Beige	26544 004	S 5005-Y20R	26.3	24806 185	
MARBLE SAFE	Grey	26544 005	S 4500-N	25.6	24806 186	
OAK TREE SAFE	Natural	25912 006	S 3010-Y40R	36.6	24806 187	
	Warm brown	25912 007	S 6010-Y50R	16.6	24806 188	
TERRAZZO SAFE	Blue Petrol	26544 008	S 2502-Y50R	43.3	24806 189	
	Gold & Silver	26544 010	S 3502-Y50R	40.2	24806 191	
	Terracotta	26544 009	S 2502-Y50R	43.5	24806 190	

Granit MultiSafe						
Design	Colour	Article code	NCS	LRV (%)	Matching welding rod (uni colour)	
GRANIT	Soft Sand	21154 469	S 1510-Y30R	61.1	1287 797	
	Soft Clay	21154 470	S 3005-Y50R	40.4	1287 291	
	Soft White Green	21154 471	S 2005-G	54.5	1287 323	
	Soft Blue	21154 472	S 4030-R90B	20.4	1287 563	
	Soft Light Aqua	21154 473	S 2020-B10G	44.1	1287 509	
	Soft White Sand	21154 123	S 1002-Y50R	73.6	1287 944	
	Soft Grey	21154 896	S 4000-N	33.9	1287 831	
	Soft Black Grey	21154 901	S 5502-B	21.4	1287 842	

Granit Safe.T						
Design	Colour	Article code	NCS	LRV (%)	Matching welding rod (uni colour)	Matching welding rod (multicolour)
GRANIT	Black	21153 506	S 8502-B	6.0	1291 933	1290 035
	Black Grey	21153 505	S 6502-B	15.1	1287 842	1290 026
	Dark Grey	21153 504	S 4502-B	28.6	1292 383	1290 021
	Dark Sand	21153 508	S 4005-Y20R	32.5	1287 830	1290 361
	Grey	21153 503	S 2500-N	50.2	1287 691	1290 121
	Soft Aqua	21153 523	S 4020-B30G	25.3	1287 940	-
	Soft Black	21153 519	S 6500-N	16.0	1294 727	-
	Soft Brick	21153 633	S 5030-Y70R	15.0	1287 665	-
	Soft Dark Blue	21153 521	S 6020-R90B	11.1	1287 001	-
	Soft Dusty Yellow	21153 909	S 3020-Y20R	37.0	1287 690	-
	Soft Light Grey	21153 524	S 2500-N	50.2	1291 811	1290 286
	Soft Pale Brick	21153 571	S 2010-Y70R	52.0	1291 983	1290 435
	Soft White Sand	21153 520	S 2005-Y30R	55.7	1292 393	1290 374
	White Beige	21153 512	S 1505-Y50R	62.5	1287 698	1290 036



■ **WESTERN EUROPE:** Austria: Tarkett Holding GmbH, Niederlassung Wien – Tel. +43 1 47 88 062 ■ Belgium: Tarkett Belux Sprl – Tel. +32 52 26 24 11 ■ Denmark: Tarkett A/S – Tel. +45 43 90 60 11 ■ Finland: Tarkett Oy – Tel. +358 9 4257 9000 ■ France: Tarkett SAS – Tel. +33 1 41 20 42 49 ■ Germany: Tarkett Holding GmbH – Tel. +49 621 68172 300 ■ Greece: Tarkett Monoprosopi Ltd – Tel. +30 210 6745 340 ■ Italy: Tarkett S.p.A. – Tel. +39 0744 7651 ■ Luxembourg: Tarkett GDL SA – Tel. +352 949 211 8804 ■ Netherlands: Tarkett BV – Tel. +31 416 685 491 ■ Norway: Tarkett AS – Tel. +47 32 20 92 00 ■ Portugal: Tarkett SA – Tel. +351 21 427 64 20 ■ Spain: Tarkett Floors S.L – Tel. +34 91 358 00 35 ■ Sweden: Tarkett Sverige AB – Tel. +46 771 25 19 00 ■ Switzerland: Tarkett Holding GmbH – Tel. +41 043 233 79 24 ■ Turkey: Tarkett Aspen – Tel. +90 212 213 65 80 ■ United Kingdom: Tarkett Ltd – Tel. +44 (0) 1622 854 040 ■ **EASTERN EUROPE:** Baltic Countries: Tarkett Baltics: Tel. +370 37 262 220 ■ Czech Republic: Tarkett org. s.r.o. – Tel. +420 271 001 600 ■ Hungary: Tarkett Polska Sp. z o.o. magyarországi fióktelepe – Tel. +36 1 437 8150 ■ Poland: Tarkett Polska Sp. z o.o. – Tel. +48 22 16 09 231 ■ Russian Federation: ZAO Tarkett RUS – Tel. +7 495 775 3737 ■ Slovakia: Tarkett Polska, organizačná zložka – Tel. +421 2 48291 317 ■ South East Europe: Tarkett SEE – Tel. +381 21 7557 649 (44) 569 12 21 ■ Ukraine: Tarkett UA – Tel. +38 (0) 44 35 45 621 ■ **ASIA AND OCEANIA:** Australia: Tarkett Australia Pty Ltd – Tel. +61 2 88 53 12 00 ■ China: Tarkett Floor Covering (Shanghai) Co. Ltd. – Tel. +86 (21) 60 95 68 38 ext 841 ■ North East Asia: Tarkett Hong Kong Limited – Tel. +852 2511 8716 ■ India: Tarkett Flooring India Pvt. Ltd. – Bangalore – Tel. +91 80 4130 3793 – New Delhi – Tel. +91 11 4352 4073 – Mumbai – Tel. +91 22 2648 8750 ■ South East Asia: Tarkett Flooring Singapore Pte. Ltd. – Tel. +65 6346 1585 ■ **AFRICA:** Tarkett International: Tel. +33 1 41 20 41 01 ■ **MIDDLE EAST:** Tarkett Middle East: Tel. +961 1 51 3363/4 ■ Israel: Tarkett International: Tel. +33 1 41 20 41 01 ■ **NORTH AMERICA:** USA: Tarkett Inc. – Tel. +1 713 869 5811 / Johnsonite – Tel. +1 440 543 8916 ■ Canada: Tarkett Inc. – Tel. +1 450 293 173 ■ **LATIN AMERICA:** Brazil: Tarkett – Tel. 55 12 3954 7108 ■ Argentina – Chile – Uruguay: Tarkett Latam Mercosur – Tel. +54 11 47 08 07 72 / +54 9 11 44 46 88 82 ■ Bolivia – Colombia – Ecuador – Panama – Paraguay – Peru – Trinidad and Tobago – Venezuela: Tarkett – Tel. +55 11 9 8410 9310 / +55 11 95494 0069 ■ Mexico /Central America: Tarkett Latam Mexico – Tel. +55 11 98410 9310

